

# Concealed Slot Drain - SDC Series

## Function

The Concealed Slot Drain is designed to provide water suction for fountain pumps without exposing the drain grating for a more aesthetic look. The cover should be filled with surrounding tile up to 3cm thick to perfectly blend into the feature. Ideal for shallow pools.

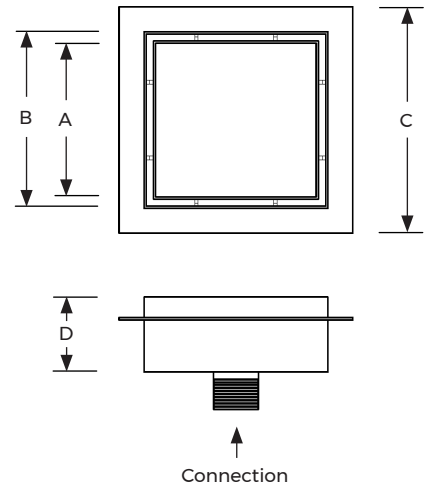
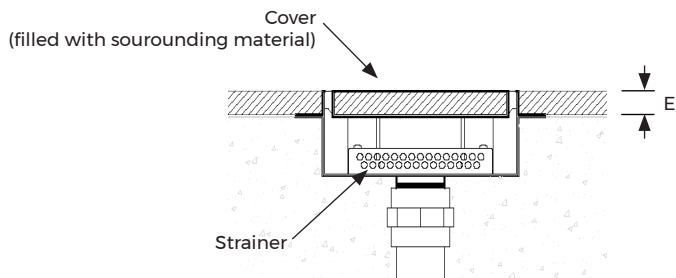
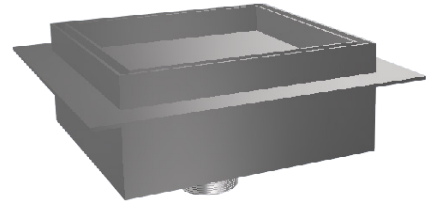
## Specifications

### Materials


Stainless steel 316

### Shape

Square



Model No.	Connection Size	A (mm)	B (mm)	C (mm)	D (mm)	E (mm)	Recommended Max. Flow (m <sup>3</sup> H)
SDC-010	3"	229	250	325	100	30	18 (0.5 m/s)
SDC-016	4"	381	402	477	100	30	27 (0.5 m/s)

Concealed Slot Drain	SDC Series	Model No. SDC	Rev. 0	
<p>The information contained in this drawing is the sole property of Aquashi. Any reproduction in part or as a whole without the written permission of Aquashi is prohibited. Aquashi reserves the right to update all designs, specifications and data sheets without prior notice.</p>				