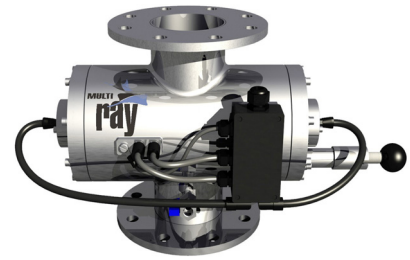


# UV Multiray (Medium Pressure) - MP Series

## Function

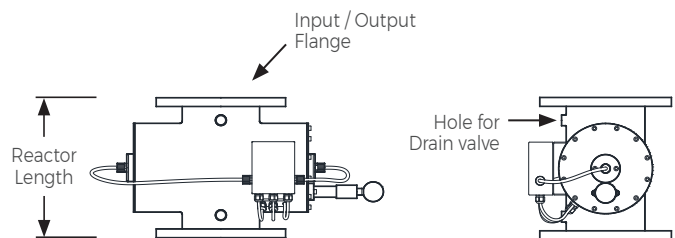
The Multiray system is designed and optimized for advanced photo oxidation process as well as general disinfection. For use in medium and large pools. This system takes advantage of the UltraTherm UV-lamps, developed for high radiation output of wavelength 200 - 240 nm to maximize photo oxidation performance.

Furthermore, reactor geometries and electronic control systems have been designed to reduce operating costs to a minimum. Large flanged connections and body geometry results in very low head loss even at a high flow rate. The intelligent PLC control enables both automatic lamp dimming and diurnal power variation.



## Specifications

<p><b>Reactor Material</b> AISI316L stainless steel</p> <p><b>Orientation of Connections</b> In-line Vertical or Horizontal installation.</p> <p><b>Temperature Protection</b> pT-100 - Titanium housing 2x thermo-switch</p> <p><b>UV sensor (Optional)</b> PTFE UV sensor</p> <p><b>Quartz sleeve wiping system (optional)</b> Fully automated quartz sleeve wiping system Integrated servo motor</p>	<p><b>Operating Pressure</b> up to 10 bar</p> <p><b>Controller type</b> PLC</p> <p><b>Control Cabinet Material</b> Powder coated steel</p> <p><b>Control cabinet Installation</b> Wall mounted</p> <p><b>Control cabinet Operating temp.</b> 0 - 40 °C</p> <p><b>Control cabinet IP Class</b> IP 54 (optional IP 65)</p> <p><b>Lamp Cable length</b> 4meters (Max. 10 m)</p>	<p><b>UV Lamp type</b> UltraTherm medium Pressure series Electronic HF Modbus</p> <p><b>UV Lamp life</b> 9000 H</p> <p><b>SCADA</b> MODBUS (optional)</p> <p><b>Approvals</b> CE</p>
---	--	--



Model No.	No. of Lamps	Power/ Lamps (W)	Inlet/ Outlet	30mJ/cm <sup>2</sup> Max. Flow m <sup>3</sup> H	60mJ/cm <sup>2</sup> Max. Flow m <sup>3</sup> H	Reactor Length (mm)	Cabinet HMI	Cabinet Power (kW)	Cabinet Dimensions (mm)
MP-NANO	1	600	2.5" BSP	30	15	200	touch screen	0.67	300X200X170
MP1-600SS	1	600	D110	60	29	250	touch screen	0.69	400X300X170
MP2-600SS	2	600	D110	120	59	400	touch screen	1.4	400X600X170
MP1-1000SS	1	1000	DN150	64	32	500	touch screen	1.1	600x600x300
MP1-2000SS	1	2000	DN200	253	126	500	touch screen	2.2	600x600x300
MP1-3500SS	1	3500	DN250	555	277	500	touch screen	3.6	600x600x400
MP2-3500SS	2	3500	DN300	1429	714	650	touch screen	7.2	800x800x300
MP3-3500SS	3	3500	DN300	2239	1119	650	touch screen	10.7	800x800x300
MP4-3500SS	4	3500	DN300	3000	1500	650	touch screen	14	800x1000x300

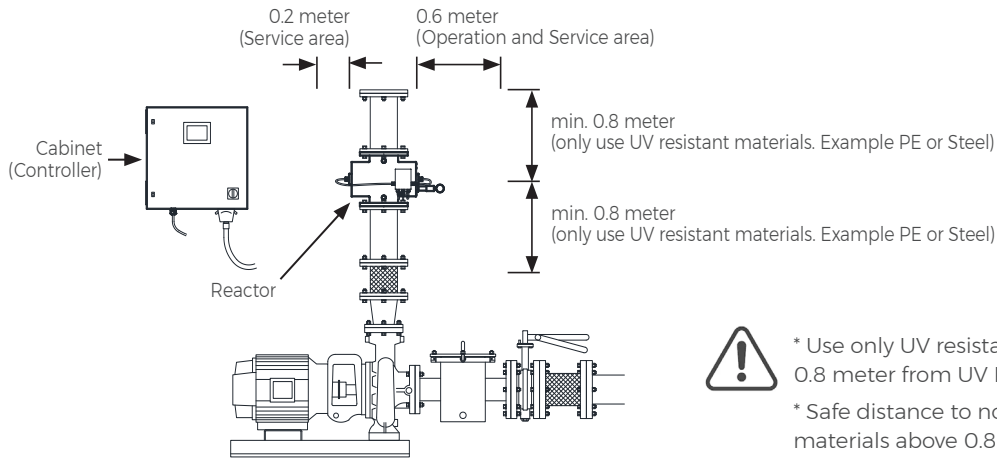



1. Max. Flow for general disinfection calculated at UV95%, min. UV dose 30 mJ/cm<sup>2</sup> and 60 mJ/cm<sup>2</sup>. Contact Aquashi for flow rates of higher or lower UV dose.
2. Holes and connections of Reactor can change depending on reactor size and type.
3. Lamp access is important.

Ultra Violet System (Multiray)	MP Series	Model No. MP	Rev. 1	
<p>The information contained in this drawing is the sole property of Aquashi. Any reproduction in part or as a whole without the written permission of Aquashi is prohibited. Aquashi reserves the right to update all designs, specifications and data sheets without prior notice.</p>				

# UV Multiray (Medium Pressure) - MP Series

## Typical Installation



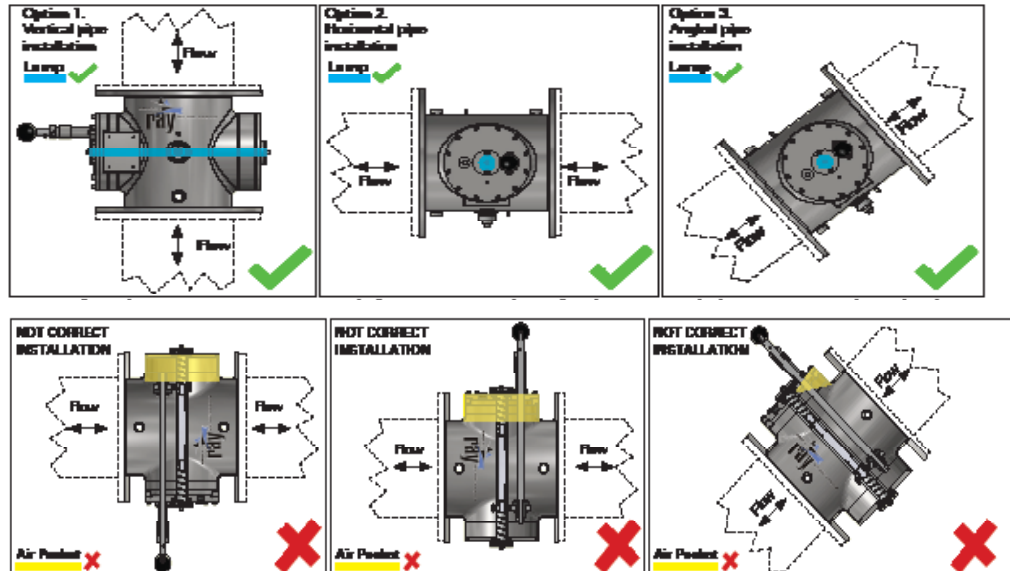
-  \* Use only UV resistant materials within 0.8 meter from UV Reactor.
- \* Safe distance to non-UV resistant materials above 0.8 meter

## Installation Guide to avoid air pockets created by pipe configuration



Do not install UV system in a pipe section which can accumulate air pockets.

Installing the reactor incorrectly will also place the lamp vertical. this will result in premature failure of the lamp which leads to overheat, causing system damage. Do not do it!




## Accessories (Spare Parts)



### UV Lamp

- \* UV-600 (for MP1-NANO, MP1-600SS, MP2-600SS)
- \* UV-1000 (for MP1-1000SS)
- \* UV-2000 (for MP1-2000SS)
- \* UV-3500 (for MP1-3500SS, MP2-3500SS, MP3-3500SS, MP4-3500SS)

Ultra Violet System (Multiray)	MP Series	Model No. MP	Rev. 1	
<p>The information contained in this drawing is the sole property of Aquashi. Any reproduction in part or as a whole without the written permission of Aquashi is prohibited. Aquashi reserves the right to update all designs, specifications and data sheets without prior notice.</p>				