

Inlet Fittings - IFF-S Series

Function

Stainless steel 316 floor mounted inlet fitting with diffuser plate to disperse flow and reduce surface turbulence. Ideal for water falls and cascading water features which require large flow volumes. Optional adjustable flow regulator.

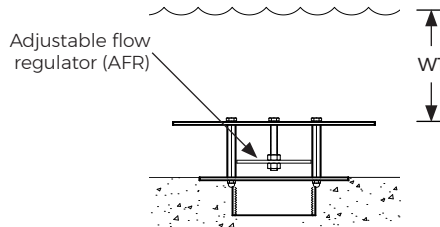
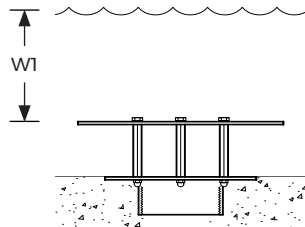
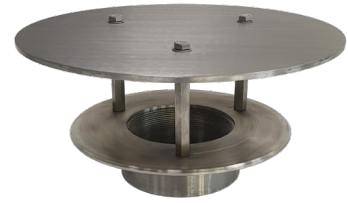
Specifications

Materials

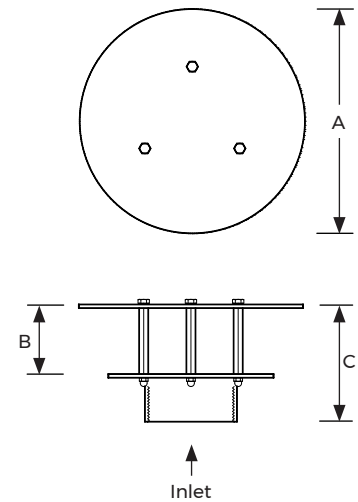
Stainless steel 316

Connection type

Female thread



* Optional IFF-S series with adjustable flow regulator.



Model No.	Inlet (BSP)	A (mm)	B (mm)	C (mm)	Min. Water Level W1 (mm)	Recommended Max. Flow (m³H)
IFF-S200	2"	200	73	125	80	18
IFF-S300	3"	300	95	160	100	41
IFF-S400	4"	300	95	160	200	67
IFF-S600	6"	390	115	200	254	144
IFF-S800	8"	510	140	225	260	262

* Add suffix AFR to model number to order with Adjustable flow regulator. i.e. IFF-S400-AFR

Inlet Fittings	IFF-S Series	Model No. IFF-S	Rev. 1	
<p>The information contained in this drawing is the sole property of Aquashi. Any reproduction in part or as a whole without the written permission of Aquashi is prohibited. Aquashi reserves the right to update all designs, specifications and data sheets without prior notice.</p>				