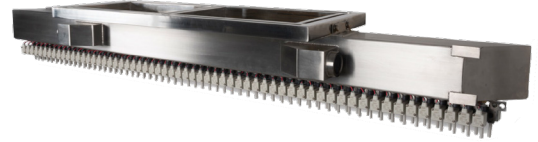


# Aquascript

## Function

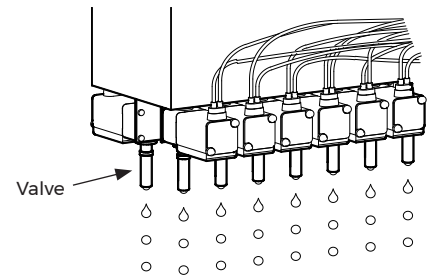
The Aquascript is fascinating technology where water can take shape of anything imaginable. The system consists of a linear array of nozzles that are digitally controlled by a computer system and software application. The nozzles are synchronized expelling single drops of water on demand creating text, logos, images or shapes.



Aquascript system is controlled by a nice and small embedded computer which is fully integrated inside a 19" 2HE box. As user-interface this computer is running a standard web server which provides our control-web-panel to all connected computers inside the local network (LAN/ WiFi) so that the system can be controlled from nearly everywhere and from any devices with web browsers.

The Aquascript is ideal for marketing purposes/ product launches or even to add an element of surprise for any event. It can be installed as a temporary or permanent installation.

- Temporary or Permanent Installation
- Flexible and Scalable
- Quick installation
- Internet / LAN connectivity
- Interactive
- Indoors/ Outdoors

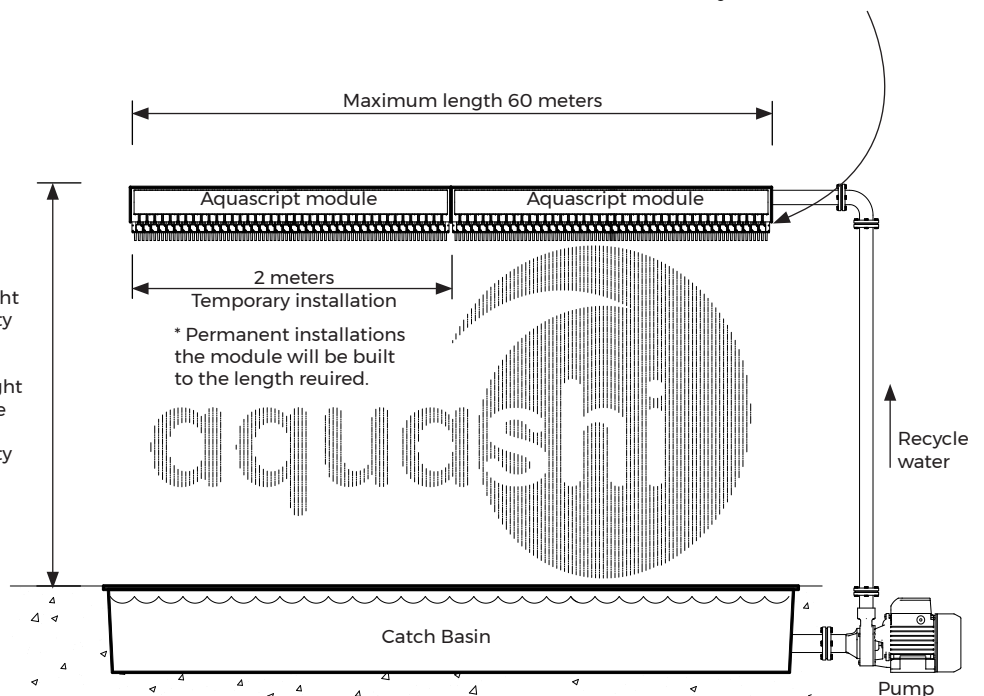



Model	No. of Valves per meter
Aquascript	40
Aquascript HD	80

\* Contact Aquashi for more information.

\* Minimum installation height 3 to 4 meters to assure clarity of shapes and letters.

\* Maximum installation height 20 meters. However only the first 8 to 10 meters will be displayed clear due to gravity



Aquascript	Aquascript	Aquascript	Rev. 1	
<p>The information contained in this drawing is the sole property of Aquashi. Any reproduction in part or as a whole without the written permission of Aquashi is prohibited. Aquashi reserves the right to update all designs, specifications and data sheets without prior notice.</p>				

# Aquascript

## Technology Lease

For temporary installations Aquascript can be rented by the day and meter under short or long term conditions to anywhere in the world and including our technical team.

## Technology Sale

The Aquascript system is sold for permanent installations down to the cm according to requirements and in any design.

## Technology Design, Development & Implementaion

From bespoke water feature designs of all kinds to robotics, from technical electronic systems & software to the conception & development of measurement/control technologies.

## Sample Installation




### Advertising

Water curtain header with synchronized nozzles expelling single drops of water on demand creating text, logos, images or shapes.



### Aqua Swing

Aquascript with a swing. Nozzle solenoids and area sensor works together turning the rain on/off to prevent the person from getting wet.

Aquascript	Aquascript	Aquascript	Rev. 1	
<p>The information contained in this drawing is the sole property of Aquashi. Any reproduction in part or as a whole without the written permission of Aquashi is prohibited. Aquashi reserves the right to update all designs, specifications and data sheets without prior notice.</p>				

# Aquascript




## Rain Room / Stage

Aquascript covers the ceiling of a room/stage. Motion sensors detect movement & turn off the rain on areas surrounding people to prevent them from getting wet.



## Water Door

Aquascript turns on/off when activated by motion sensor to allow people to enter and exit, acting as a water door.

Aquascript	Aquascript	Aquascript	Rev. 1	
<p>The information contained in this drawing is the sole property of Aquashi. Any reproduction in part or as a whole without the written permission of Aquashi is prohibited. Aquashi reserves the right to update all designs, specifications and data sheets without prior notice.</p>				