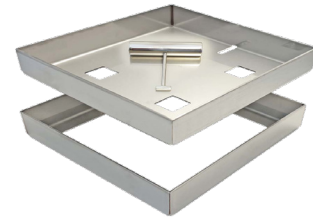


# Deck Cover - DAC Series

## Function

Deck Covers are used to conceal service access to electrical boxes, skimmers, valves and more. Designed to carry the chosen hardscape material allowing the lid to blend seamlessly into the surrounding area, resulting in a visually appealing and discreet service cover.

Tiles of various thicknesses from 5 - 40 mm can be used. A safety key is used to remove Deck Cover lids.



## Specifications

### Materials

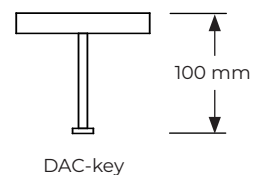
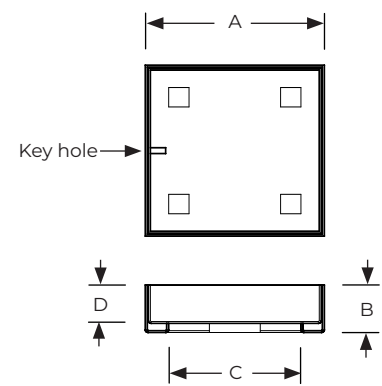
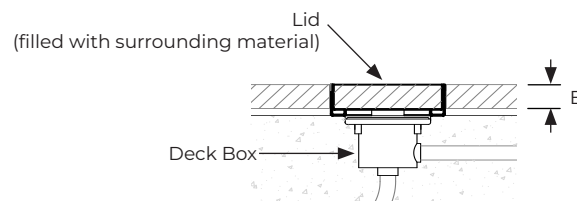
Stainless steel 316

### Shape

Square

### Safety Key (included)

Stainless steel 316




### Tile size 5 - 10 mm

Model No.	A (mm)	B (mm)	C (mm)	D (mm)	E (mm)
DAC-180-1	180	22	130	10	5 - 10
DAC-230-1	230	22	180	10	5 - 10
DAC-280-1	280	22	230	10	5 - 10
DAC-330-1	330	22	280	10	5 - 10
DAC-380-1	380	22	330	10	5 - 10

### Tile size 25 - 40 mm

Model No.	A (mm)	B (mm)	C (mm)	D (mm)	E (mm)
DAC-180-4	180	52	130	40	25 - 40
DAC-230-4	230	52	180	40	25 - 40
DAC-280-4	280	52	230	40	25 - 40
DAC-330-4	330	52	280	40	25 - 40
DAC-380-4	380	52	330	40	25 - 40

Deck Cover	DAC Series	Model No. DAC	Rev. 0	
The information contained in this drawing is the sole property of Aquashi. Any reproduction in part or as a whole without the written permission of Aquashi is prohibited. Aquashi reserves the right to update all designs, specifications and data sheets without prior notice.				