

# Swimming Pool Light - DVS Series

## Function

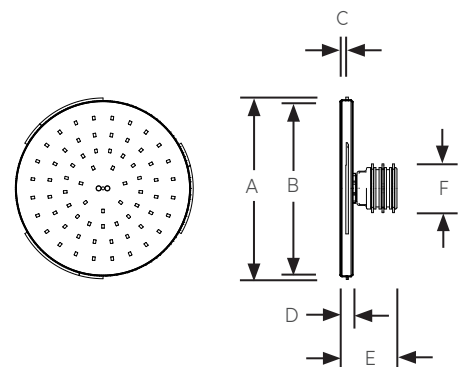
DVS Series generates strong levels of lumen output for fully lit pools. The LED lamps come in single or multicolour (RGB) LED providing a range of colours and effects which can create a special ambience to the pool depending on the users mood or special occasions. The LED lamp is fully sealed and IP68 rated so water cannot penetrate or damage the fixture. Fitted with the Quick Connect cabling system that is reliable and easy to mount or remove for maintenance without the need to drain the pool or cut cables.

RGB LED lights have an embedded 16 programmed animation can be controlled using the RF remote (RM-200) or by simply turning off and on the lamps in a sequenced manner. Available in 50, 100 and 170mm diameter lamp sizes.



## Specifications

<b>Power</b> 8W - 40W	<b>Standard Cable Length</b> 2 meters
<b>Voltage</b> 12V AC	<b>Temperature range:</b> +40° water temperature
<b>Colours</b> RGB / Day White	<b>Lamp Life:</b> 25,000 Hrs
<b>Beam Angle:</b> 116 °	<b>Protection Rating:</b> IP 68
<b>Control</b> On/off	IEC class III
<b>Cable</b> 2 C - 1 mm <sup>2</sup>	



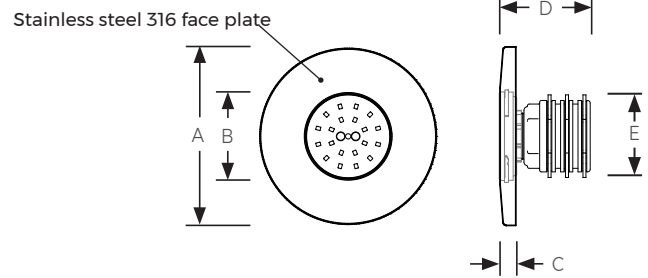
## LED Pool Lamp

Model No.	Description	Colour	Power (W)	Luminous flux (lm)	A (mm)	B (mm)	C (mm)	D (mm)	E (mm)	F (BSP)
DVS-050-RGB	Ø50 RGB Pool light	RGB	8	450	56	50	4	10	54	1.5
DVS-050-WH	Ø50 Day White Pool light	Day White (5000 K)	10	700	56	50	4	10	54	1.5
DVS-100-RGB	Ø100 RGB Pool light	RGB	20	1550	106	100	5	10	54	1.5
DVS-100-WH	Ø100 Day White Pool light	Day White (5000 K)	26	2300	106	100	5	10	54	1.5
DVS-170-RGB	Ø170 RGB Pool light	RGB	32	2450	175	170	5	10	54	1.5
DVS-170-WH	Ø170 Day White Pool light	Day White (5000 K)	40	3950	175	170	5	10	54	1.5

\* All white lighth sizes available in tunable series, replace WH into TW. i.e DVS-050-TW

Underwater LED Swimming Pool Light	DVS Series	Model No. DVS	Rev. 1	
<p>The information contained in this drawing is the sole property of Aquashi. Any reproduction in part or as a whole without the written permission of Aquashi is prohibited. Aquashi reserves the right to update all designs, specifications and data sheets without prior notice.</p>				

# Swimming Pool Light - DVS Series



## LED Pool Lamp with Face plate

Model No.	Description	Colour	Power (W)	Luminous flux (lm)	A (mm)	B (mm)	C (mm)	D (mm)	E (BSP)
SPL-DVS-050-RGB	Ø50 RGB Pool light	RGB	8	450	100	50	10	54	1.5
SPL-DVS-050-WH	Ø50 Day White Pool light	Day White (5000 K)	10	700	100	50	10	54	1.5
SPL-DVS-100-RGB	Ø100 RGB Pool light	RGB	20	1550	170	100	10	54	1.5
SPL-DVS-100-WH	Ø100 Day White Pool light	Day White (5000 K)	26	2300	170	100	10	54	1.5
SPL-DVS-170-RGB	Ø170 RGB Pool light	RGB	32	2450	270	170	10	54	1.5
SPL-DVS-170-WH	Ø170 Day White Pool light	Day White (5000 K)	40	3950	270	170	10	54	1.5

\* All white lighth sizes available in tunable series, replace WH into TW. i.e SPL-DVS-050-TW

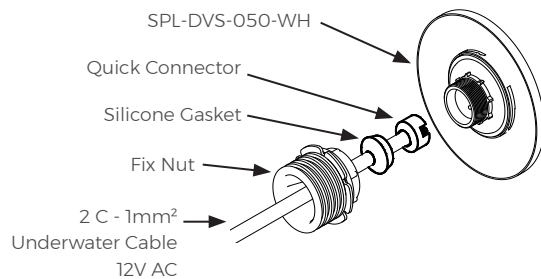


### Precautions:

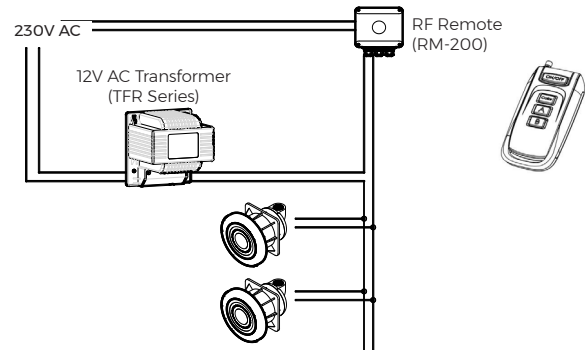
- \* DVS series lamps must be completely submerged into water during operation.
- \* Fixing the lamps with adhesives or silicone kit into a niche is not allowed.
- \* For operation only with safety isolation transformer

## Connection Diagram

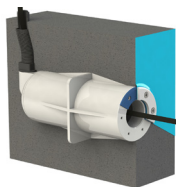
### Quick Connect cabling system



### Typical wiring installation



## Accessories



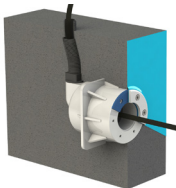
### PZA-WC-S

\* Niche for SPL-DVS  
Built-in length: 247 mm  
Hole size: 1.5" BSP (front), 3/4" BSP (back)  
(Available upon request)



### PZA-WG-S

\* Niche with flange for SPL-DVS  
Built-in length: 191 mm  
Hole size: 1.5" BSP (flange), 3/4" BSP (back)  
(Available upon request)



### PZA-WCS-S

\* Niche for SPL-DVS  
Built-in length: 130 mm  
Hole size: 1.5" BSP (front), 3/4" BSP (back)  
(Available upon request)

Underwater LED Swimming Pool Light	DVS Series	Model No. DVS	Rev. 1	
<p>The information contained in this drawing is the sole property of Aquashi. Any reproduction in part or as a whole without the written permission of Aquashi is prohibited. Aquashi reserves the right to update all designs, specifications and data sheets without prior notice.</p>				