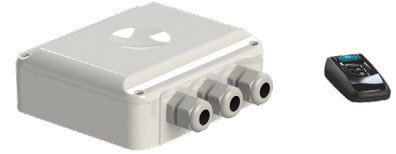


Remote - RM-Link

Function

The RM-Link comes with a handheld remote which wirelessly controls LED lights. Can be connected to home automation system via RS-485, CAN bus and DIP switch for linking multiple RM-Link to control more lights. Can also communicate with DMX 512. SD card slot for firmware update.

When used with Link Touch controller (optional) more configurations will be available, such as Light Dimming function, colour temperature adjustment and more.



Specifications

Input Voltage

12 VAC

Frequency band transmitter

868 MHz

Auxiliary outputs

2 nos.

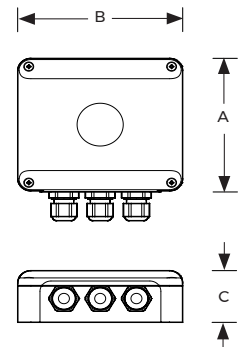
DMX512 interface: Yes

RS485 interface: Yes

Link touch Compatible: Yes

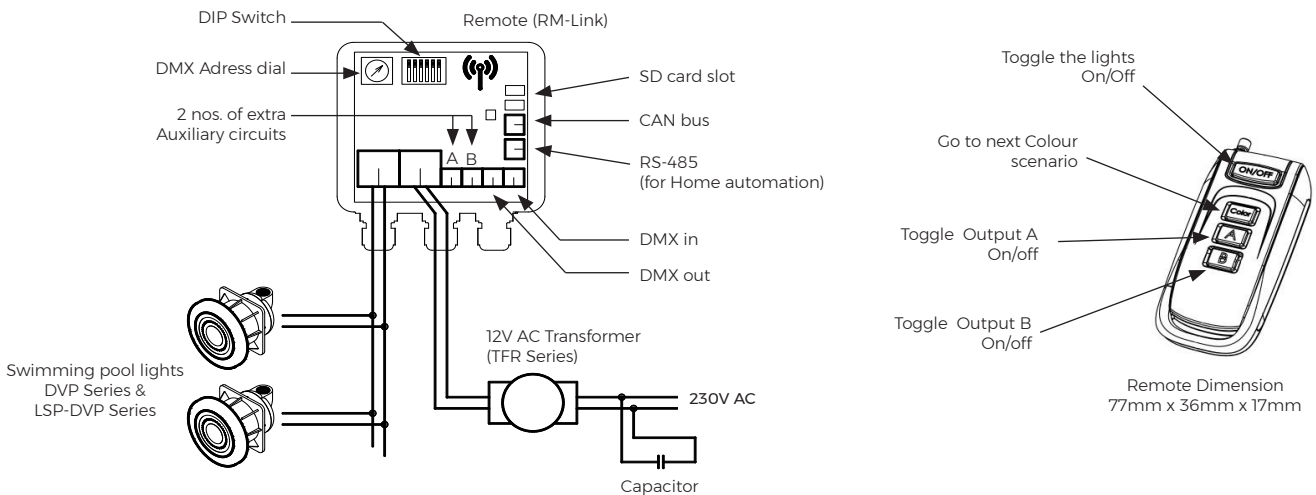
Protection Rating

IP 54



Model No.	Description	A (mm)	B (mm)	C (mm)
RM-Link	RF Remote	150	130	54

Typical Wiring Installation



Accessories



Link Touch - RGB(W)
* for RGB or RGBW lights

Remote	RM-Link Series	Model No. RM-Link	Rev. 0	
<p>The information contained in this drawing is the sole property of Aquashi. Any reproduction in part or as a whole without the written permission of Aquashi is prohibited. Aquashi reserves the right to update all designs, specifications and data sheets without prior notice.</p>				