

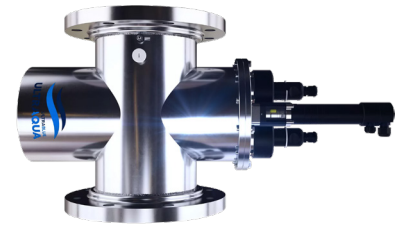
Ultra Blue UV System - UB Series

Function

ULTRABLUE swimming pool UV system is the result of extensive scientific research and R&D activities, aimed at optimizing disinfection, reducing chloramines, and ensuring crypto/giardia safety in swimming pools. The system effectively lowers combined chlorine levels, improves air quality, and provides healthier water for swimmers.

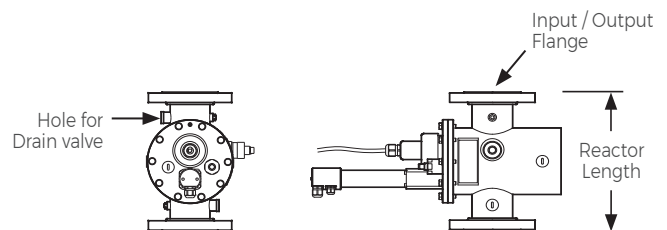
To minimize operating costs, the reactor geometries and electronic control systems have been designed with large, flanged connections and body geometry resulting in minimal head loss even at high flow rates. Its intelligent PLC control enables automatic operational efficiency through lamp dimming based on combined chlorine sensing via UV sensor

Reactor comes with an automatic wiper with a variable brush head for the UV sensor window cleaning.



Specifications

Reactor Material AISI316L stainless steel	Control cabinet Installation Wall mounted	UV Lamp life 9000 H
Orientation of Connections In-line Vertical or Horizontal installation.	Control cabinet Operating temp. 0 - 40 °C	SCADA MODBUS
Temperature Protection pT-100 - Titanium housing 2x thermo-switch	Control cabinet IP Class IP 54 (optional IP 65)	Approvals CE
Operating Pressure up to 10 bar	Lamp Cable length 4meters (Max. 30 m)	Quartz sleeve wiping system Fully automated system
Controller type PLC	UV Lamp type UltraTherm medium Pressure series	UV sensor (Optional) PTFE UV sensor
Control Cabinet Material Powder coated steel	UV Lamp power dimming ULTRADOSE 30% - 100%	



Model No.	No. of Lamps	Power/ Lamps (W)	Inlet/ Outlet	40mJ/cm ² Max. Flow m ³ H	60mJ/cm ² Max. Flow m ³ H	Reactor Length (mm)	Cabinet HMI	Cabinet Power (kW)	Cabinet Dimensions (mm)
ULTRABLUE1-600SS	1	600	DN80	34	31	320	7" ULTRATOUCH	0.69	700x500x260
ULTRABLUE2-600SS	2	600	DN100	79	68	340	7" ULTRATOUCH	1.38	700x500x260
ULTRABLUE1-2500SS	1	2500	DN150	146	139	360	7" ULTRATOUCH	3.22	800x800x300
ULTRABLUE2-2500SS	2	2500	DN200	348	338	400	7" ULTRATOUCH	5.52	800x800x300
ULTRABLUE2-4000SS	2	4000	DN250	545	409	420	7" ULTRATOUCH	16.63	1000x800x400
ULTRABLUE3-4000SS	3	4000	DN300	1050	908	480	7" ULTRATOUCH	16.63	1000x800x400

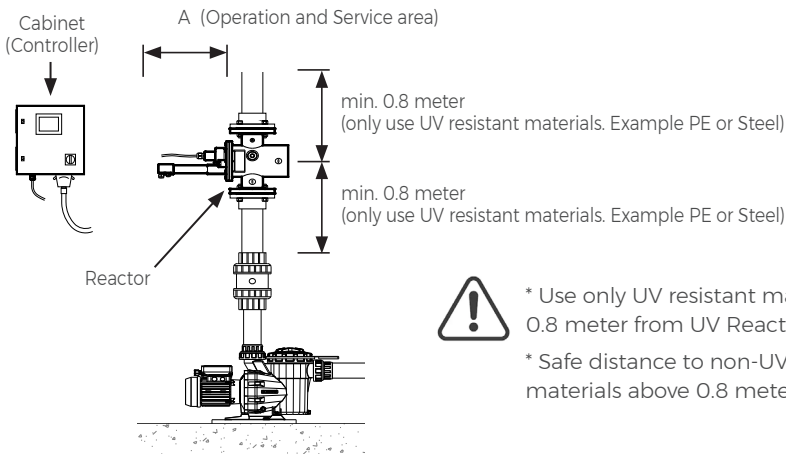
Ultra Violet System	UB Series	Model No. UB	Rev. 0	
<p>The information contained in this drawing is the sole property of Aquashi. Any reproduction in part or as a whole without the written permission of Aquashi is prohibited. Aquashi reserves the right to update all designs, specifications and data sheets without prior notice.</p>				

Ultra Blue UV System - UB Series



1. Max. Flow for general disinfection calculated at UV95%, min. UV dose 40 mJ/cm² and 60 mJ/cm². Contact Aquashi for flow rates of higher or lower UV dose.
2. Holes and connections of Reactor can change depending on reactor size and type.
3. Lamp access is important.

Typical Installation



A Operation and Service area	for Model No.
0.35 meter	UB1-600SS, UB2-600SS
0.5 meter	UB1-2500SS, UB2-2500SS
0.63 meter	UB2-4000SS, UB3-4000SS



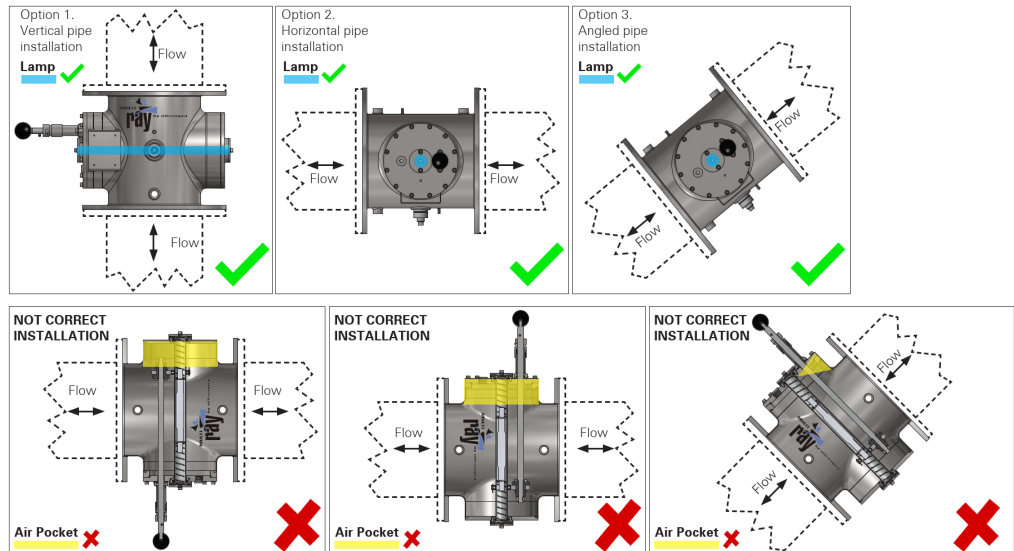
- * Use only UV resistant materials within 0.8 meter from UV Reactor.
- * Safe distance to non-UV resistant materials above 0.8 meter

Installation Guide to avoid air pockets created by pipe configuration



Do not install UV system in a pipe section which can accumulate air pockets.

Installing the reactor incorrectly will also place the lamp vertical. This will result in premature failure of the lamp which leads to overheat, causing system damage. Do not do it!



Accessories (Spare Parts)



UV Lamp

- * UV-600 (for UB1-600SS, UB2-600SS)
- * UV-2500 (for UB1-2500SS, UB2-2500SS)
- * UV-4000 (for UB2-4000SS, UB3-4000SS)

Ultra Violet System	UB Series	Model No. UB	Rev. 0	
<p>The information contained in this drawing is the sole property of Aquashi. Any reproduction in part or as a whole without the written permission of Aquashi is prohibited. Aquashi reserves the right to update all designs, specifications and data sheets without prior notice.</p>				