

Underwater LED Swimming Pool Light - LSP-PLP Series

Function

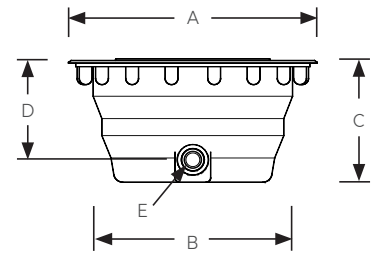
Niche mounted PLP Series LED lamps offers a range of fixed colours and dynamic scenarios. Best paired with Remote - Link Touch to have a wider range of control functions such as pool light colour temperature and dimming level adjustment. The lights consists of a stainless steel 316 face plate with an ABS or Stainless steel 316 niche. The LED lamp is fully sealed so water cannot penetrate or damage the fixture. Fitted with the Quick Connect cabling system that is reliable and easy to mount.

If not used with Remote Link touch, RGB LED lights have an embedded 16 programmed animation can be controlled using the RF remote (RM-200) or by simply turning off and on the lamps in a sequenced manner.

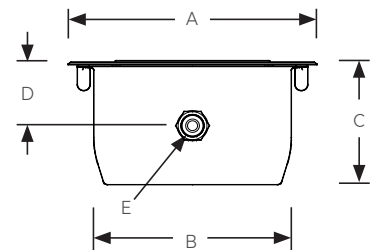



Specifications

Power 32W - 40W	Control On/off	Lamp Life: 25,000 Hrs
Voltage 12V AC	Cable 2 C - 1 mm ²	Protection Rating: IP 68
Colours RGB / Day White	Standard Cable Length 2 meters	IEC class III
Beam Angle: 116 °	Temperature range: +40° water temperature	



Model No.	Description	Niche type	Colour	Power (W)	Luminous flux (lm)	A (mm)	B (mm)	C (mm)	D (mm)	E (BSP) Female thread
LSP-PLP-170RGB-ABS	ABS niched RGB LED Swimming Pool light	ABS	RGB	66	3700	272	216	137	125	3/4"
LSP-PLP-170TW-ABS	ABS niched Tunable white LED Swimming Pool light	ABS	White (3000 - 6500 K)	70	4250	272	216	137	125	3/4"
LSP-PLP-170WH-ABS	ABS niched Day white LED Swimming Pool light	ABS	Day white (5000 K)	57	5500	272	216	137	125	3/4"
LSP-PLP-170WW-ABS	ABS niched Warm white LED Swimming Pool light	ABS	Warm White (3300 K)	55	4950	272	216	137	125	3/4"



Underwater LED Swimming Pool Light	LSP-PLP Series	Model No. LSP-PLP	Rev. 0	
<p>The information contained in this drawing is the sole property of Aquashi. Any reproduction in part or as a whole without the written permission of Aquashi is prohibited. Aquashi reserves the right to update all designs, specifications and data sheets without prior notice.</p>				

Underwater LED Swimming Pool Light - LSP-DVS Series

Model No.	Description	Niche type	Colour	Power (W)	Luminous flux (lm)	A (mm)	B (mm)	C (mm)	D (mm)	E (BSP) Female thread
LSP-PLP-170RGB-SS	SS 316 niched RGB LED Swimming Pool light	SS316	RGB	66	3700	272	225	125	70	3/4"
LSP-PLP-170TW-SS	SS316 niched Tunable white LED Swimming Pool light	SS316	White (3000 - 6500 K)	70	4250	272	225	125	70	3/4"
LSP-PLP-170WH-SS	SS316 niched Day white LED Swimming Pool light	SS316	Day white (5000 K)	57	5500	272	225	125	70	3/4"
LSP-PLP-170WW-SS	SS316 niched Warm white LED Swimming Pool light	SS316	Warm White (3300 K)	55	4950	272	225	125	70	3/4"

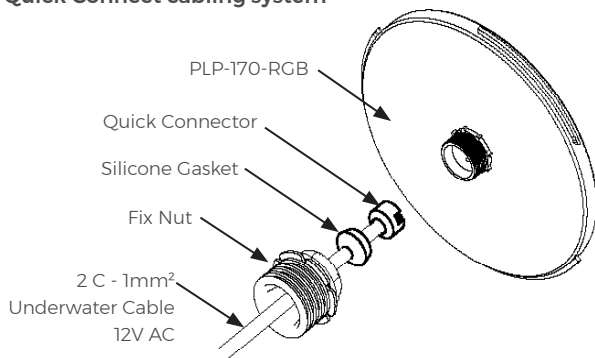


Precautions:

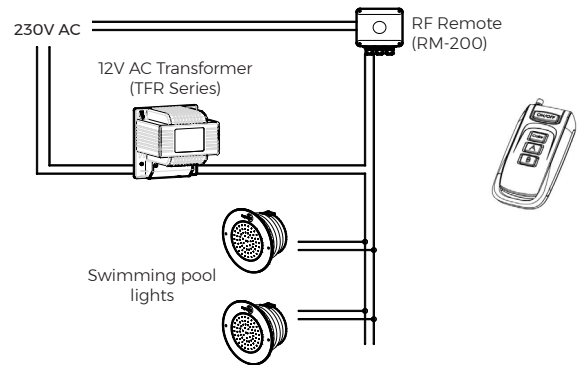
- * LSP-PLP series lamps must be completely submerged into water during operation.
- * For operation only with safety isolation transformer

Connection Diagram

Quick Connect cabling system

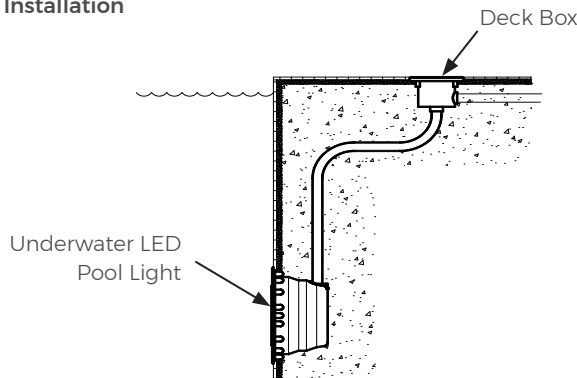



Typical wiring installation



Typical Installation

Swimming Pool Installation



Underwater LED Swimming Pool Light	LSP-PLP Series	Model No. LSP-PLP	Rev. 0	
<p>The information contained in this drawing is the sole property of Aquashi. Any reproduction in part or as a whole without the written permission of Aquashi is prohibited. Aquashi reserves the right to update all designs, specifications and data sheets without prior notice.</p>				