

# LED Pool Light - SPL-DVM Series

## Function

DVM Series are medium level lumen output LED lamps suitable for swimming pools. The LED lamps come in single or multicolour (RGB) LED providing a range of colours and effects which can create a special ambience to the pool depending on the users mood or special occasions. The LED lamp is fully sealed and IP68 rated so water cannot penetrate or damage the fixture. Fitted with the Quick Connect cabling system that is reliable and easy to mount or remove for maintenance without the need to drain the pool or cut cables.

RGB LED lights have an embedded 11 fixed colour programs. These lights can be controlled using the Link Driver (RM-200) or by simply toggling the lamps off and on in a specific sequence. Available in 50, 100 and 170mm diameter lamp sizes.



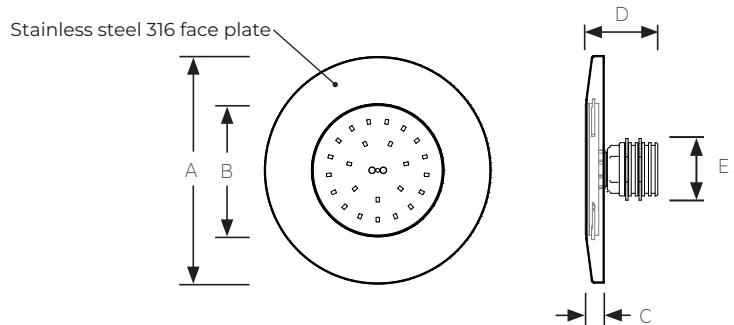
DVM-170-WH



SPL-DVM-50-WH


## Specifications

<b>Power</b> 5W - 20W	<b>Cable</b> 2 C - 1 mm <sup>2</sup>
<b>Voltage</b> 12V AC	<b>Standard Cable Length</b> 2 meters
<b>Colours</b> RGB / White	<b>Temperature range:</b> +40° water temperature
<b>Beam Angle:</b> 116 °	<b>Lamp Life:</b> 25,000 Hrs
<b>Control</b> On/off	<b>Protection Rating:</b> IP 68, IEC class III

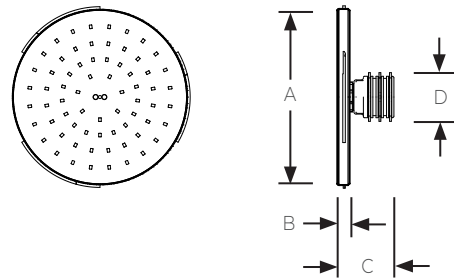


### LED Pool Lamp with Face plate

Model No.	Description	Colour	Power (W)	Luminous flux (lm)	A (mm)	B (mm)	C (mm)	D (mm)	E (BSP)
SPL-DVM-050-RGB	Ø50 DVM - RGB Pool light with Faceplate	RGB	8	400	100	50	10	55	1.5
SPL-DVM-050-WH	Ø50 DVM - White Pool light with Faceplate	White (5000 K)	5	375	100	50	10	55	1.5
SPL-DVM-100-RGB	Ø100 DVM - RGB Pool light with Faceplate	RGB	16	1000	170	100	10	55	1.5
SPL-DVM-100-WH	Ø100 DVM - White Pool light with Faceplate	White (5000 K)	9	875	170	100	10	55	1.5
SPL-DVM-170-RGB	Ø170 DVM - RGB Pool light with Faceplate	RGB	20	1600	270	170	10	55	1.5
SPL-DVM-170-WH	Ø170 DVM - White Pool light with Faceplate	White (5000 K)	17	1675	270	170	10	55	1.5

Underwater LED Swimming Pool Light	DVM Series	Model No. SPL-DVM	Rev. 2	
<p>The information contained in this drawing is the sole property of Aquashi. Any reproduction in part or as a whole without the written permission of Aquashi is prohibited. Aquashi reserves the right to update all designs, specifications and data sheets without prior notice.</p>				

# LED Pool Light - SPL-DVM Series



## LED Pool Lamp ( for retrofit )

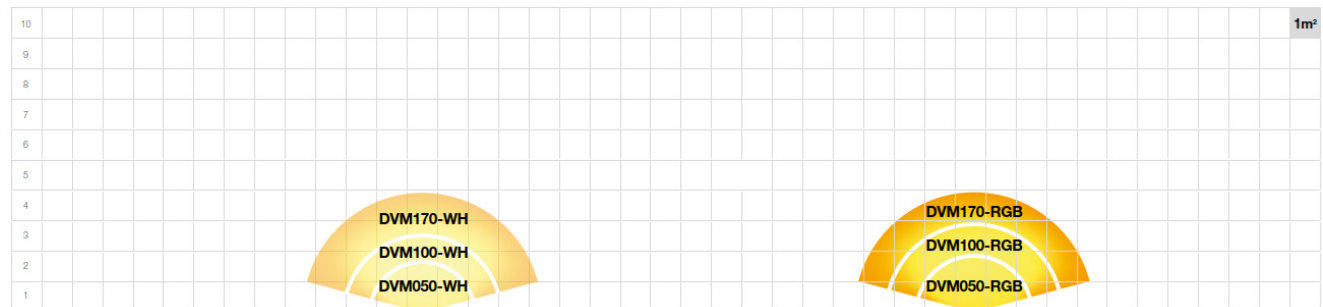
Model No.	Description	Colour	Power (W)	Luminous flux (lm)	A (mm)	B (mm)	C (mm)	D (BSP)
DVM-050-RGB	Ø50 DVM - RGB Pool Lamp	RGB	8	400	50	10	55	1.5
DVM-050-WH	Ø50 DVM - White Pool Lamp	White (5000 K)	5	375	50	10	55	1.5
DVM-100-RGB	Ø100 DVM - RGB Pool Lamp	RGB	16	1000	100	10	55	1.5
DVM-100-WH	Ø100 DVM - White Pool Lamp	White (5000 K)	9	875	100	10	55	1.5
DVM-170-RGB	Ø170 DVM - RGB Pool Lamp	RGB	20	1600	170	10	55	1.5
DVM-170-WH	Ø170 DVM - White Pool Lamp	White (5000 K)	17	1675	170	10	55	1.5



### Precautions:

- \* DVM series lamps must be completely submerged into water during operation.
- \* Fixing the lamps with adhesives or silicone kit into a niche is not allowed.
- \* For operation only with safety isolation transformer

## Illumination per m<sup>2</sup>:

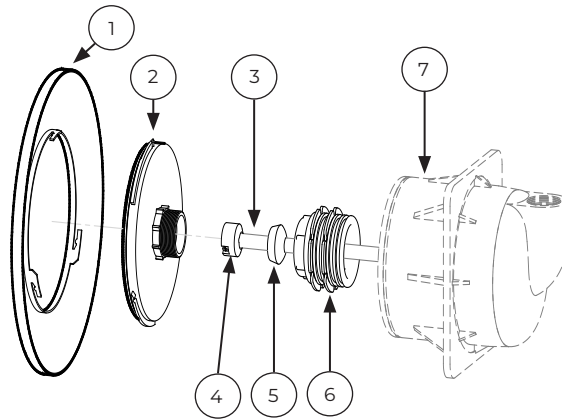


- \* Values in graph refer to swimming pools with white or light-coloured walls that require 100 - 150 lm/m<sup>2</sup>.
- \* Increase the light (lumen) by 50% for medium colours.
- \* Dark walls are difficult to illuminate and need up to 250% extra light.

Underwater LED Swimming Pool Light	DVM Series	Model No. SPL-DVM	Rev. 2	
<p>The information contained in this drawing is the sole property of Aquashi. Any reproduction in part or as a whole without the written permission of Aquashi is prohibited. Aquashi reserves the right to update all designs, specifications and data sheets without prior notice.</p>				

# LED Pool Light - SPL-DVM Series

## Connection Diagram



### Lamp Assembly

#	Part Name
1	Ø100 SS faceplate (RO type)
2	DVM-100-RGB

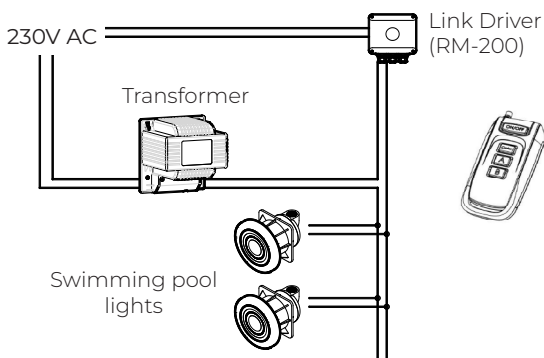
### Quick Connect cable system

#	Part Name
3	2 C - 1mm² Underwater Cable ( 12V AC )
4	Quick connector
5	Silicone Gasket
6	Fix Nut

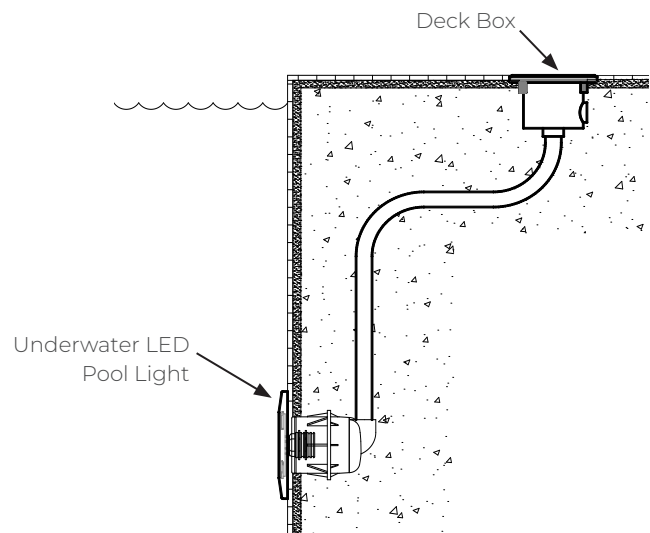
### Niche Assembly

#	Part Name
7	Niche ( sold separately )

### Typical wiring installation



### Typical Swimming Pool Installation



### Synchronizing & color changing ( only for RGB lamps )

#### Manual synchronization

1. Turn the lamps ON and make sure all lights up.
2. Turn them OFF for MINIMUM 20 seconds (max 60 sec)
3. Switch ON and Switch OFF (max 3 sec ON and 3 sec OFF)
4. Switch ON and Switch OFF (max 3 sec ON and 3 sec OFF)
5. Switch ON
6. The lamps should now all be on colour program 6 : BLUE

Underwater LED Swimming Pool Light	DVM Series	Model No. SPL-DVM	Rev. 2	
<p>The information contained in this drawing is the sole property of Aquashi. Any reproduction in part or as a whole without the written permission of Aquashi is prohibited. Aquashi reserves the right to update all designs, specifications and data sheets without prior notice.</p>				

# LED Pool Light - SPL-DVM Series

## Changing colors

Turn the lamps OFF and quickly back ON, The lamp will jump to the next colour program.

## Memorizing the actual color

1. Turn the lamps OFF for MINIMUM 20 seconds
2. The chosen colour has now been memorized

## 11 Colour programs ( only for RGB Lamps )

Program #	Program Name	Colour
1	CANDLE LIGHT	2000K very warm white
2	WARM WHITE	3000K warm white
3	NEUTRAL WHITE	5000K neutral white
4	COLD WHITE	9500K cold white
5	CARIBBEAN BLUE	cyan
6	BLUE	blue
7	GREEN	green
8	RED	red
9	PURPLE	purple
10	YELLOW DYNAMIC	slow animation yellow
11	BLUE DYNAMIC	fast animation blue

## Accessories



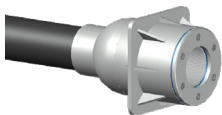
**Link Driver**  
RM-200  
\* for all PLP Series  
Swimming pool lights



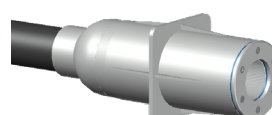
**PZA-WCS-NG + PZA-FLEX-S**  
\* Niche for SLP-DVM  
Built-in length: 145 mm  
Hole size: 1.5" BSP  
Conduit connection: 3/4" BSP



**PZA-WC-NG + PZA-FLEX-S**  
\* Niche for SLP-DVM  
Built-in length: 262 mm  
Hole size: 1.5" BSP  
Conduit connection: 3/4" BSP



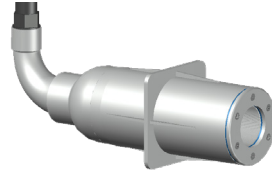
**PZA-WCS-NG**  
\* Niche for SLP-DVM  
Built-in length: 152 mm  
Hole size: 1.5" BSP  
Conduit connection: 50mm Pipe



**PZA-WC-NG**  
\* Niche for SLP-DVM  
Built-in length: 269 mm  
Hole size: 1.5" BSP  
Conduit connection: 50mm Pipe



**PZA-WCS-NG + PZA-FLEX-NG**  
\* Niche for SLP-DVM  
Built-in length: 225 mm  
Hole size: 1.5" BSP  
Conduit connection: 3/4" BSP



**PZA-WC-NG + PZA-FLEX-NG**  
\* Niche for SLP-DVM  
Built-in length: 345 mm  
Hole size: 1.5" BSP  
Conduit connection: 3/4" BSP

Underwater LED Swimming Pool Light	DVM Series	Model No. SPL-DVM	Rev. 2	
<p>The information contained in this drawing is the sole property of Aquashi. Any reproduction in part or as a whole without the written permission of Aquashi is prohibited. Aquashi reserves the right to update all designs, specifications and data sheets without prior notice.</p>				