

Underwater LED Swimming Pool Light - LSP-DVM Series

Function

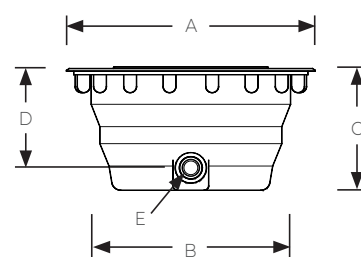
Niche mounted DVM Series LED lamps is a medium level of lumen output LED lights which is designed for concrete pools. Available in white or colour changing LED. The lights consists of a stainless steel 316 face plate with an ABS or Stainless steel 316 niche. The LED lamp is fully sealed so water cannot penetrate or damage the fixture. Fitted with the Quick Connect cabling system that is reliable and easy to mount.

RGB LED lights have an embedded 11 fixed colour programs. These lights can be controlled using the Link Driver (RM-200) or by simply toggling the lamps off and on in a specific sequence.

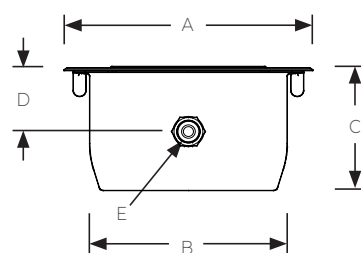


Specifications


Power 17W - 20W	Control On/off	Lamp Life: 25,000 Hrs
Voltage 12V AC	Cable 2 C - 1 mm ²	Protection Rating: IP 68
Colours RGB / White	Standard Cable Length 2 meters	IEC class III
Beam Angle: 116 °	Temperature range: +40° water temperature	



Model No.	Description	Niche type	Colour	Power (W)	Luminous flux (lm)	A (mm)	B (mm)	C (mm)	D (mm)	E (BSP) Female thread
LSP-DVM-170RGB-ABS	ABS niched RGB LED Swimming Pool light	ABS	RGB	20	1600	272	216	137	125	3/4"
LSP-DVM-170WH-ABS	ABS niched White LED Swimming Pool light	ABS	White (5000 K)	17	1675	272	216	137	125	3/4"



Model No.	Description	Niche type	Colour	Power (W)	Luminous flux (lm)	A (mm)	B (mm)	C (mm)	D (mm)	E (BSP) Female thread
LSP-DVM-170RGB-SS	SS 316 niched RGB LED Swimming Pool light	SS316	RGB	20	1600	272	225	125	70	3/4"
LSP-DVM-170WH-SS	SS 316 niched White LED Swimming Pool light	SS316	White (5000 K)	17	1675	272	225	125	70	3/4"

Underwater LED Swimming Pool Light	LSP-DVM Series	Model No. LSP-DVM	Rev. 1	
The information contained in this drawing is the sole property of Aquashi. Any reproduction in part or as a whole without the written permission of Aquashi is prohibited. Aquashi reserves the right to update all designs, specifications and data sheets without prior notice.				

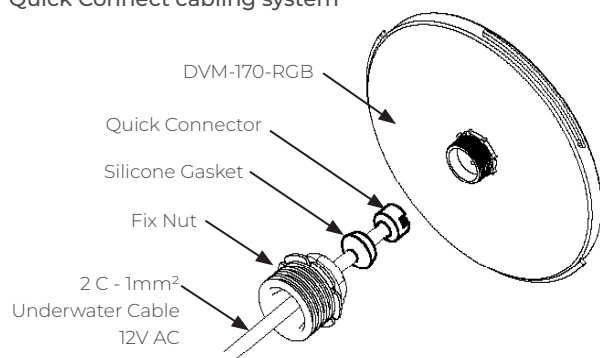
Underwater LED Swimming Pool Light - LSP-DVM Series


Precautions:

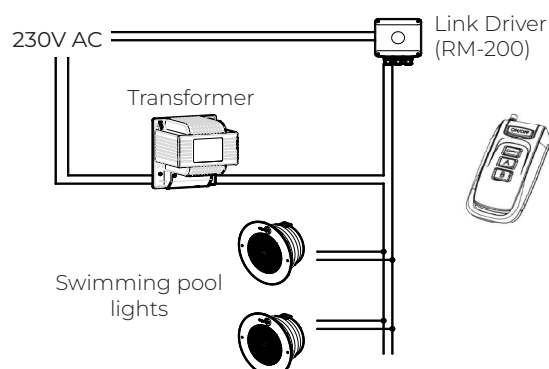
- * LSP-DVM series lamps must be completely submerged into water during operation.
- * For operation only with safety isolation transformer

Connection Diagram

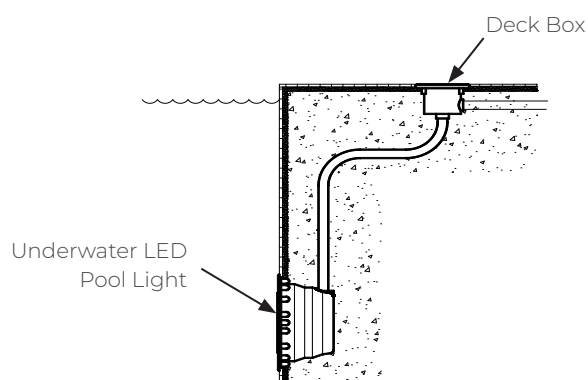
Quick Connect cabling system



Typical wiring installation



Typical Swimming Pool Installation



Synchronizing & color changing (only for RGB lamps)

Manual synchronization


1. Turn the lamps ON and make sure all lights up.
2. Turn them OFF for MINIMUM 20 seconds (max 60 sec)
3. Switch ON and Switch OFF (max 3 sec ON and 3 sec OFF)
4. Switch ON and Switch OFF (max 3 sec ON and 3 sec OFF)
5. Switch ON
6. The lamps should now all be on colour program 6 : BLUE

Changing colors

Turn the lamps OFF and quickly back ON, The lamp will jump to the next colour program.

Memorizing the actual color

1. Turn the lamps OFF for MINIMUM 20 seconds
2. The chosen colour has now been memorized

Underwater LED Swimming Pool Light	LSP-DVM Series	Model No. LSP-DVM	Rev.1	
The information contained in this drawing is the sole property of Aquashi. Any reproduction in part or as a whole without the written permission of Aquashi is prohibited. Aquashi reserves the right to update all designs, specifications and data sheets without prior notice.				

Underwater LED Swimming Pool Light - LSP-DVM Series


11 Colour programs (only for RGB Lamps)

Program #	Program Name	Colour
1	CANDLE LIGHT	2000K very warm white
2	WARM WHITE	3000K warm white
3	NEUTRAL WHITE	5000K neutral white
4	COLD WHITE	9500K cold white
5	CARIBBEAN BLUE	cyan
6	BLUE	blue
7	GREEN	green
8	RED	red
9	PURPLE	purple
10	YELLOW DYNAMIC	slow animation yellow
11	BLUE DYNAMIC	fast animation blue

Accessories



Link Driver
RM-200
* for all LSP-DVM Series Swimming pool lights

Underwater LED Swimming Pool Light	LSP-DVM Series	Model No. LSP-DVM	Rev. 1	
The information contained in this drawing is the sole property of Aquashi. Any reproduction in part or as a whole without the written permission of Aquashi is prohibited. Aquashi reserves the right to update all designs, specifications and data sheets without prior notice.				