

# LED Pool Light - SPL-DVS Series

## Function

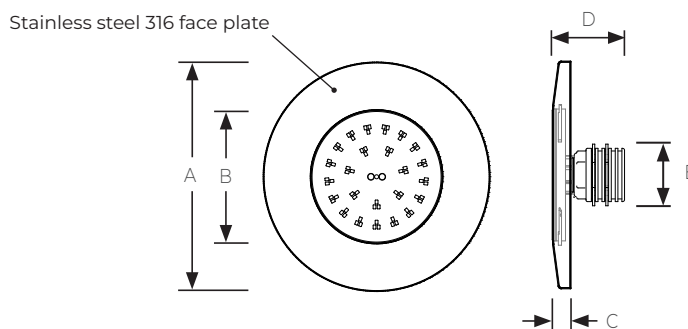
DVS Series generates strong levels of lumen output for fully lit pools. The LED lamps come in single or multicolour (RGB) LED providing a range of colours and effects which can create a special ambience to the pool depending on the users mood or special occasions. The LED lamp is fully sealed and IP68 rated so water cannot penetrate or damage the fixture. Fitted with the Quick Connect cabling system that is reliable and easy to mount or remove for maintenance without the need to drain the pool or cut cables.

RGB LED lights have an embedded 11 fixed colour programs. These lights can be controlled using the Link Driver (RM-200) or by simply toggling the lamps off and on in a specific sequence. Available in 50, 100 and 170mm diameter lamp sizes.




## Specifications

<b>Power</b> 8W - 40W	<b>Standard Cable Length</b> 2 meters
<b>Voltage</b> 12V AC	<b>Temperature range:</b> +40° water temperature
<b>Colours</b> RGB / White	<b>Lamp Life:</b> 25,000 Hrs
<b>Beam Angle:</b> 116 °	<b>Protection Rating:</b> IP 68, IEC class III
<b>Control</b> On/off	
<b>Cable</b> 2 C - 1 mm <sup>2</sup>	

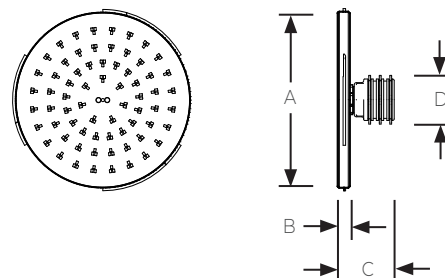


### LED Pool Lamp with Face plate

Model No.	Description	Colour	Power (W)	Luminous flux (lm)	A (mm)	B (mm)	C (mm)	D (mm)	E (BSP)
SPL-DVS-050-RGB	Ø50 DVS - RGB Pool light with Face plate	RGB	8	450	100	50	10	55	1.5
SPL-DVS-050-WH	Ø50 DVS - White Pool light with Face plate	White (5000 K)	10	700	100	50	10	55	1.5
SPL-DVS-050-TW	Ø50 DVS - Tunable White Pool light with Face plate	Tunable White (3000 - 6500K + blue)	8	550	100	50	10	55	1.5
SPL-DVS-100-RGB	Ø100 DVS - RGB Pool light with Face plate	RGB	20	1550	170	100	10	55	1.5
SPL-DVS-100-WH	Ø100 DVS - White Pool light with Face plate	White (5000 K)	26	2300	170	100	10	55	1.5
SPL-DVS-100-TW	Ø100 DVS - Tunable White Pool light with Face plate	Tunable White (3000 - 6500K + blue)	20	1500	170	100	10	55	1.5
SPL-DVS-170-RGB	Ø170 DVS - RGB Pool light with Face plate	RGB	32	2450	270	170	10	55	1.5
SPL-DVS-170-WH	Ø170 DVS - White Pool light with Face plate	White (5000 K)	40	3950	270	170	10	55	1.5
SPL-DVS-170-TW	Ø170 DVS - Tunable White Pool light with Face plate	Tunable White (3000 - 6500K + blue)	32	2400	270	170	10	55	1.5

Underwater LED Swimming Pool Light	DVS Series	Model No. SPL-DVS	Rev. 2	
The information contained in this drawing is the sole property of Aquashi. Any reproduction in part or as a whole without the written permission of Aquashi is prohibited. Aquashi reserves the right to update all designs, specifications and data sheets without prior notice.				

# LED Pool Light - SPL-DVS Series



## LED Pool Lamp

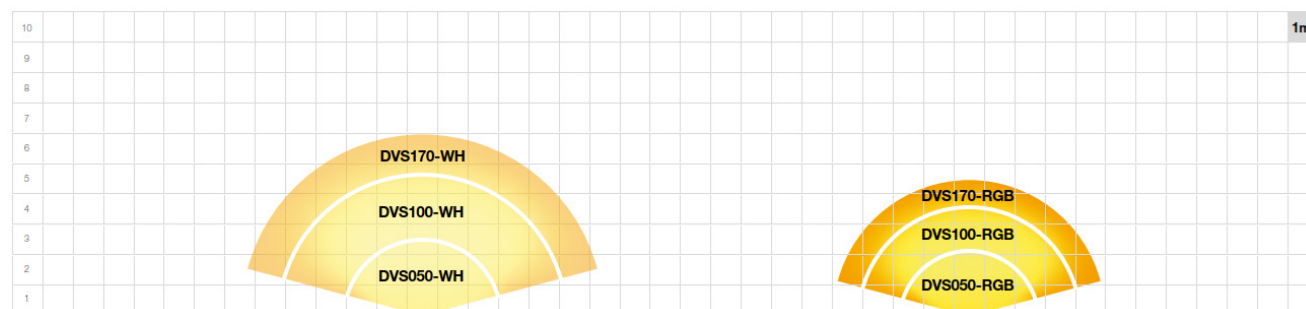
Model No.	Description	Colour	Power (W)	Luminous flux (lm)	A (mm)	B (mm)	C (mm)	D (BSP)
DVS-050-RGB	Ø50 DVS - RGB Pool lamp	RGB	8	450	50	10	55	1.5
DVS-050-WH	Ø50 DVS - White Pool lamp	White (5000 K)	10	700	50	10	55	1.5
DVS-050-TW	Ø50 DVS - Tunable White Pool lamp	Tunable White (3000 - 6500K + blue)	8	550	50	10	55	1.5
DVS-100-RGB	Ø100 DVS - RGB Pool lamp	RGB	20	1550	100	10	55	1.5
DVS-100-WH	Ø100 DVS - White Pool lamp	White (5000 K)	26	2300	100	10	55	1.5
DVS-100-TW	Ø100 DVS - Tunable White Pool lamp	Tunable White (3000 - 6500K + blue)	20	1500	100	10	55	1.5
DVS-170-RGB	Ø170 DVS - RGB Pool lamp	RGB	32	2450	170	10	55	1.5
DVS-170-WH	Ø170 DVS - White Pool lamp	White (5000 K)	40	3950	170	10	55	1.5
DVS-170-TW	Ø170 DVS - Tunable White Pool lamp	Tunable White (3000 - 6500K + blue)	32	2400	170	10	55	1.5




### Precautions:

- \* DVS series lamps must be completely submerged into water during operation.
- \* Fixing the lamps with adhesives or silicone kit into a niche is not allowed.
- \* For operation only with safety isolation transformer

## Illumination per m<sup>2</sup>:

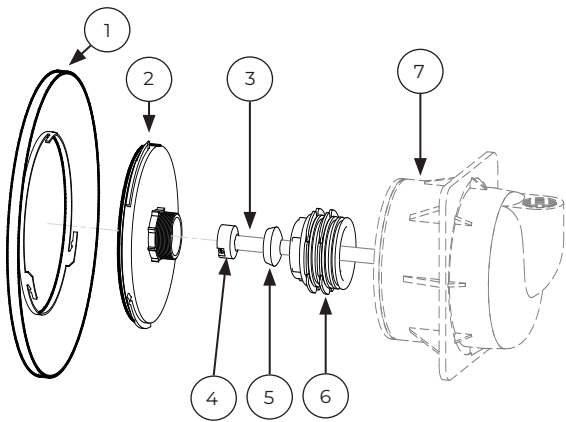


- \* Values in graph refer to swimming pools with white or light-coloured walls that require 100 - 150 lm/m<sup>2</sup>.
- \* Increase the light (lumen) by 50% for medium colours.
- \* Dark walls are difficult to illuminate and need up to 250% extra light.

Underwater LED Swimming Pool Light	DVS Series	Model No. SPL-DVS	Rev. 2	
The information contained in this drawing is the sole property of Aquashi. Any reproduction in part or as a whole without the written permission of Aquashi is prohibited. Aquashi reserves the right to update all designs, specifications and data sheets without prior notice.				

# LED Pool Light - SPL-DVS Series

## Connection Diagram



### Lamp Assembly

#	Part Name
1	Ø100 SS faceplate (RO type)
2	DVS-100-RGB

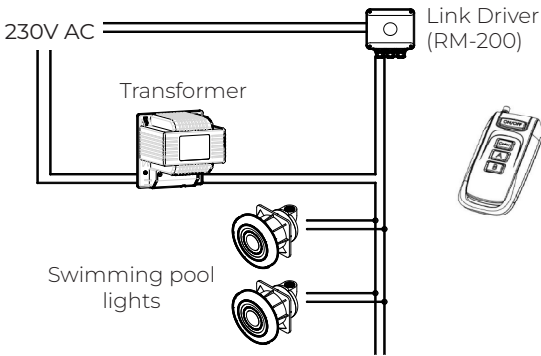
### Quick Connect cable system

#	Part Name
3	2 C - 1mm² Underwater Cable ( 12V AC )
4	Quick connector
5	Silicone Gasket
6	Fix Nut

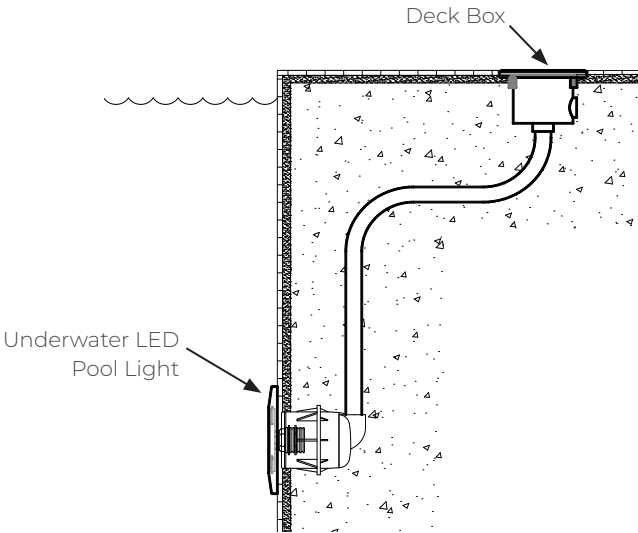
### Niche Assembly

#	Part Name
7	Niche ( sold separately )

### Typical wiring installation




### Typical Swimming Pool Installation



### Synchronizing & color changing ( only for RGB lamps )

#### Manual synchronization

1. Turn the lamps ON and make sure all lights up.
2. Turn them OFF for MINIMUM 20 seconds (max 60 sec)
3. Switch ON and Switch OFF (max 3 sec ON and 3 sec OFF)
4. Switch ON and Switch OFF (max 3 sec ON and 3 sec OFF)
5. Switch ON
6. The lamps should now all be on colour program 6

Underwater LED Swimming Pool Light	DVS Series	Model No. SPL-DVS	Rev. 2	
The information contained in this drawing is the sole property of Aquashi. Any reproduction in part or as a whole without the written permission of Aquashi is prohibited. Aquashi reserves the right to update all designs, specifications and data sheets without prior notice.				

# LED Pool Light - SPL-DVS Series

## Changing colors

Turn the lamps OFF and quickly back ON, The lamp will jump to the next colour program.

## Memorizing the actual color

1. Turn the lamps OFF for MINIMUM 20 seconds
2. The chosen colour has now been memorized

## 11 Colour programs ( only for RGB Lamps )

Program #	Program Name	Colour
1	CANDLE LIGHT	2000K very warm white
2	WARM WHITE	3000K warm white
3	NEUTRAL WHITE	5000K neutral white
4	COLD WHITE	9500K cold white
5	CARIBEAN BLUE	cyan
6	BLUE	blue
7	GREEN	green
8	RED	red
9	PURPLE	purple
10	YELLOW DYNAMIC	slow animation yellow
11	BLUE DYNAMIC	fast animation blue

## 6 White tints ( for TW Lamps )

Program #	White tints
1	2000K
2	3000K
3	5000K
4	9500K
5	13500K
6	17500K

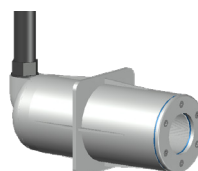
## Accessories



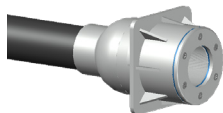
**Link Driver**  
RM-200  
\* for all DVS Series  
Swimming pool lights



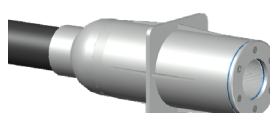
**PZA-WCS-NG + PZA-FLEX-S**  
\* Niche for SLP-DVS  
Built-in length: 145 mm  
Hole size: 1.5" BSP  
Conduit connection: 3/4" BSP



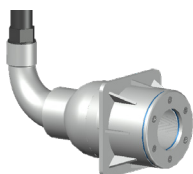
**PZA-WC-NG + PZA-FLEX-S**  
\* Niche for SLP-DVS  
Built-in length: 262 mm  
Hole size: 1.5" BSP  
Conduit connection: 3/4" BSP



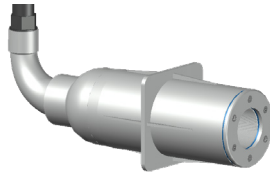
**PZA-WCS-NG**  
\* Niche for SLP-DVS  
Built-in length: 152 mm  
Hole size: 1.5" BSP  
Conduit connection: 50mm Pipe




**PZA-WC-NG**  
\* Niche for SLP-DVS  
Built-in length: 269 mm  
Hole size: 1.5" BSP  
Conduit connection: 50mm Pipe



**PZA-WCS-NG + PZA-FLEX-NG**  
\* Niche for SLP-DVS  
Built-in length: 225 mm  
Hole size: 1.5" BSP  
Conduit connection: 3/4" BSP



**PZA-WC-NG + PZA-FLEX-NG**  
\* Niche for SLP-DVS  
Built-in length: 345 mm  
Hole size: 1.5" BSP  
Conduit connection: 3/4" BSP

Underwater LED Swimming Pool Light	DVS Series	Model No. SPL-DVS	Rev. 2	
The information contained in this drawing is the sole property of Aquashi. Any reproduction in part or as a whole without the written permission of Aquashi is prohibited. Aquashi reserves the right to update all designs, specifications and data sheets without prior notice.				