

LED Power and Data Supply Panel - LEDPDS-P Series

Function

Aquashi LED Power and Data supply panel is used to supply power and data for DMX controlled LED lights.

DMX splitters equally divide power and data for each light enabling a clean DMX signal for up to 8 lights per splitter. Panel enclosure is suitable for indoor or outdoor use. Includes circuit breaker with fuse over current circuit protection. Fan and power indication LED.



Specifications

Power

60W / 120W / 240W / 480W

Supply Voltage

115-230V AC, 50Hz - 60Hz

Output Voltage

24V DC (12V DC by request)

Enclosure material

Fibreglass reinforced Polyester,
RAL7032 colour

Mounting Plate

Hot dip galvanized steel sheet

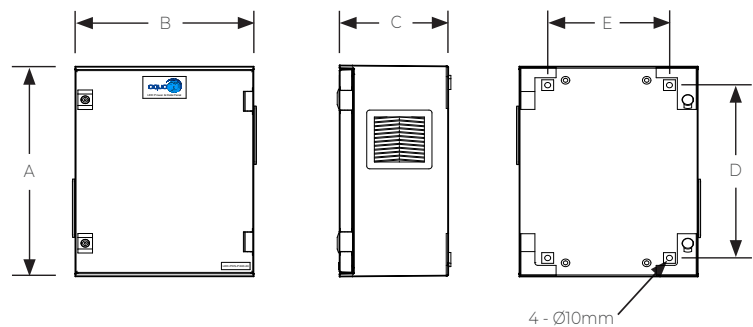
Protection Rating:

IP 55, IK10

Electrical Standards:

IEC62208 Standard


CE approved



Model No.	Description	Output Voltage	Power	no. of Splitter	A (mm)	B (mm)	C (mm)	D (mm)	E (mm)
LEDPDS-P60-24-1	60W LED Power & Data Panel - 24V DC, with 8 DMX Signal Outputs	24V DC	60 W	1	430	330	200	325	225
LEDPDS-P120-24-1	120W LED Power & Data Panel - 24V DC, with 8 DMX signal outputs	24V DC	120W	1	430	330	200	325	225
LEDPDS-P120-24-2	120W LED Power & Data Panel - 24V DC, with 16 DMX signal outputs	24V DC	120W	2	530	430	200	425	325
LEDPDS-P240-24-1	240W LED Power & Data Panel - 24V DC, with 8 DMX signal outputs	24V DC	240W	1	430	330	200	325	225
LEDPDS-P240-24-4	240W LED Power & Data Panel - 24V DC, with 32 DMX signal outputs	24V DC	240W	4	530	430	200	425	325
LEDPDS-P480-24-2	480W LED Power & Data Panel - 24V DC, with 16 DMX signal outputs	24V DC	480W	2	530	430	200	425	325
LEDPDS-P480-24-8	480W LED Power & Data Panel - 24V DC, with 64 DMX signal outputs	24V DC	480W	8	847	636	300	755	530

* Change 24 into 12 to model number to order 12V DC control panel. i.e. LEDPDS-P60-12

* Custom Power and Data supply panel available by request

LED Power and Data Supply Panel	LEDPDS-P Series	Model No. LEDPDS-P	Rev. 4	
The information contained in this drawing is the sole property of Aquashi. Any reproduction in part or as a whole without the written permission of Aquashi is prohibited. Aquashi reserves the right to update all designs, specifications and data sheets without prior notice.				

LED Power and Data Supply Panel - LEDPDS-P Series

Notes

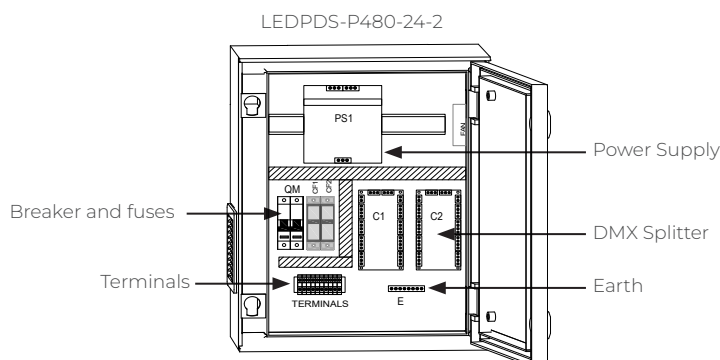
1. For use with DMX controlled LED lights.
2. LED light Power cable size and length shall be selected according to voltage drop calculation.
3. Data cable shall not exceed 50m length from panel to LED light fixture. Contact Aquashi for custom requirement.
4. Wiring shall be done by a qualified electrician. Ensure data cables are terminated securely.
5. Data cable shall be isolated from power cables.
6. Ensure LEDPDS panel is earthed.
7. Data cable wired into power output may damage LED light fixtures and will void the product warranty.

Model No.	Maximum no. of DMX controlled LED Lights that can be use per LEDPDS Panel									
										
	FSLED-S035	RGLLED-S035	RGLLED-S055	SHLED-S035R	LINLED-035	FSLED-S006	FMCLED-S006	FMMLED-S006	SHLED-P-S035	LFLED-A035-24
LEDPDS-P60-24-1	1	1	1	1	1	7	7	7	1	1
LEDPDS-P120-24-1	3	3	3	3	3	X	X	X	3	3
LEDPDS-P120-24-2	X	X	X	X	X	15	15	15	X	X
LEDPDS-P240-24-1	6	6	6	6	6	X	X	X	6	6
LEDPDS-P240-24-4	X	X	X	X	X	30	30	30	X	X
LEDPDS-P480-24-2	13	13	13	13	13	X	X	X	13	13
LEDPDS-P480-24-8	X	X	X	X	X	60	60	60	X	X

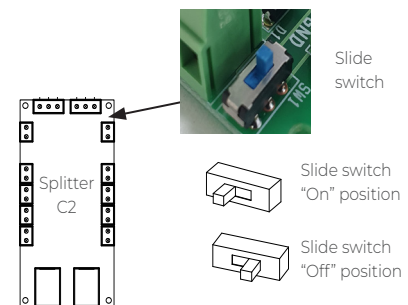
* X - means it is not recommended to use the LEDPDS panel for the quantity of LED lights.

* Check out individual product data sheet for more details.


LEDPDS Parts



DMX Splitter 120Ω Termination switch

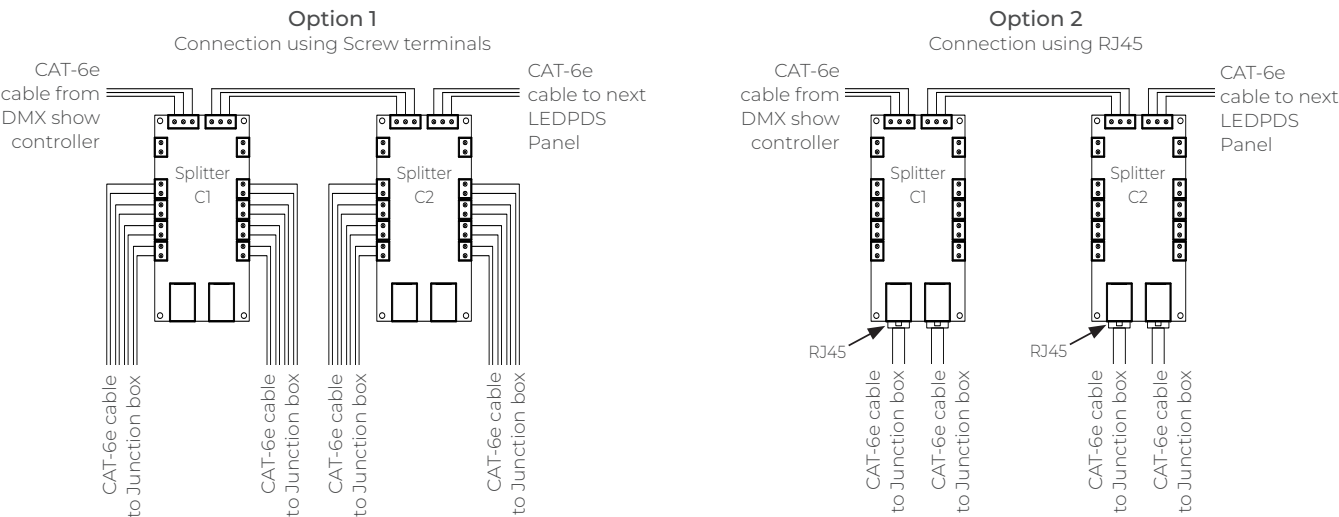


** 120Ω termination switch must be on "Off" position for the last DMX splitter of the last LEDPDS panel in DMX network.

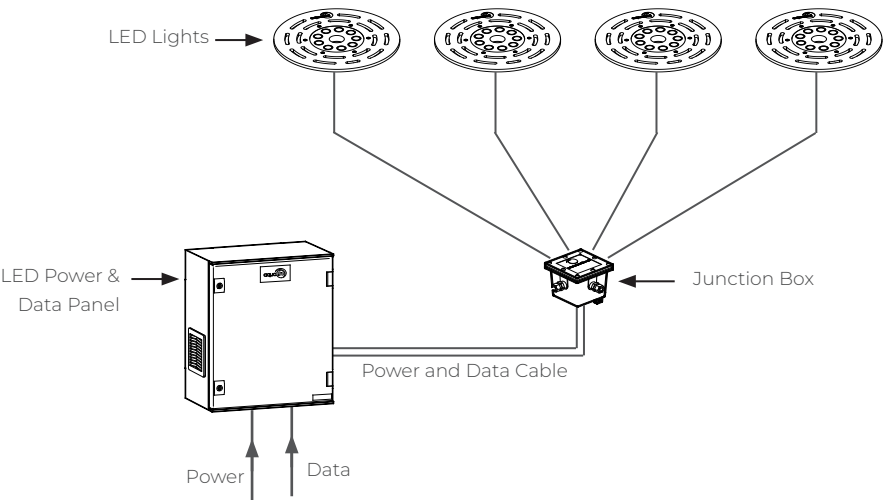
LED Power and Data Supply Panel	LEDPDS-P Series	Model No. LEDPDS-P	Rev. 4	
The information contained in this drawing is the sole property of Aquashi. Any reproduction in part or as a whole without the written permission of Aquashi is prohibited. Aquashi reserves the right to update all designs, specifications and data sheets without prior notice.				

LED Power and Data Supply Panel - LEDPDS-P Series

DMX Splitter connection for DMX controlled lights



Typical Electrical Wiring



LED Power and Data Supply Panel	LEDPDS-P Series	Model No. LEDPDS-P	Rev. 4	
The information contained in this drawing is the sole property of Aquashi. Any reproduction in part or as a whole without the written permission of Aquashi is prohibited. Aquashi reserves the right to update all designs, specifications and data sheets without prior notice.				