

Laminar Jet - LJ Series

Function

The laminar jet produces a parabolic water rod which is a clear and continuous tube of water until it falls down. The Laminar jet is equipped with an LED light and when illuminated at night becomes a striking attraction for pools and water features. Available in LED white or RGBW colour changing. The unit can be installed out of water or submerged to maximum water level shown. Fine filtration is a key requirement for this kind of water feature. Recommended to use with screen discharge filter (SF series).

Specifications

Laminar Tank Material

Stainless steel 316

Connection Sizes

1" BSP Inlet connection

Stand adjustment

0° - 90°

Protection Rating:

Laminar jet: IP 68

Light Power

5 - 8W

Light Voltage

24V DC

Light Colours

RGBW / White

Light Cable

4 C - 1 mm² (DMX light)

2 C - 1.5 mm² (White light)

Standard Cable Length

1.5 m (Custom length available on request)

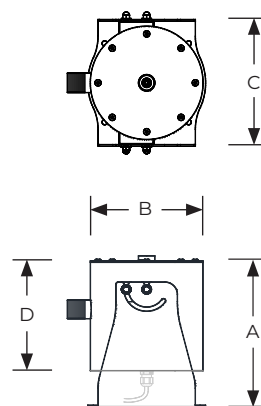
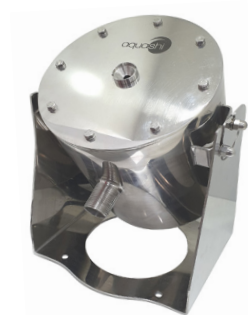
Light Material:

Stainless steel 316

Protection Rating:

Laminar Tank: IP68

Light: IP 68, IK 10

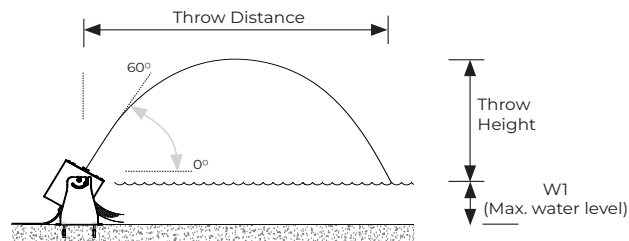


Model No.	Inlet (BSP)	Colour	Control	Power (W)	W1 (mm)	A (mm)	B (mm)	C (mm)	D (mm)
LJ-100	1"	RGBW	DMX	8	185	306	219	259	233
LJ-101	1"	Cool white	On/off	5	185	306	219	259	233
LJ-102	1"	Warm white	On/off	5	185	306	219	259	233

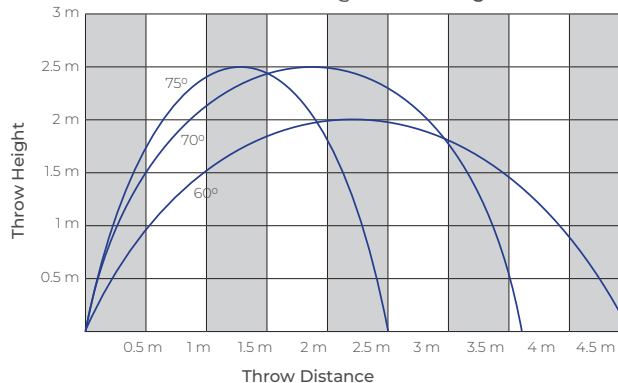
* Add suffix DMX to model number to order DMX controlled white light. i.e. LJ-102-DMX


* Add suffix AUTO to model number to order Auto colour changing effect for RGBW light. i.e. LJ-100-AUTO

Angle	Throw Height (meters)	Throw Distance (meters)	Flow (LPM)	Pressure Head (m)	
@ 75°	1.5	1.5	15	2.3	Optimal
	2	2	17.4	2.9	
	2.5	2.5	19.5	3.5	
	3	3	21.4	4.2	
	3.5	3.5	23.3	4.9	
@ 70°	1.5	2.1	15.4	2.3	Optimal
	2	2.9	17.6	3.1	
	2.5	3.6	19.8	3.8	
	3	4.2	22	4.6	
	3.5	5	24.6	5.4	
@ 60°	1	2.3	13.7	1.8	Optimal
	1.5	3.4	16.8	2.6	
	2	4.5	19.6	3.6	
	2.5	5.6	22	4.5	
	3	6.7	24.5	5.5	



Laminar Water Parabolas @ different angles

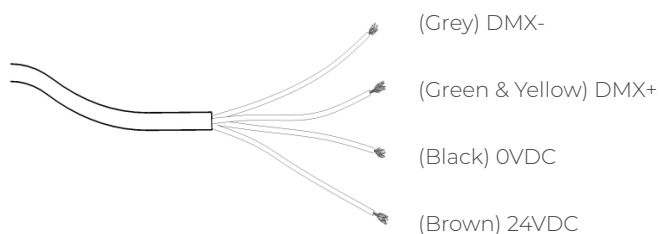


Laminar Jet	LJ Series	Model No. LJ	Rev. 1	
The information contained in this drawing is the sole property of Aquashi. Any reproduction in part or as a whole without the written permission of Aquashi is prohibited. Aquashi reserves the right to update all designs, specifications and data sheets without prior notice.				

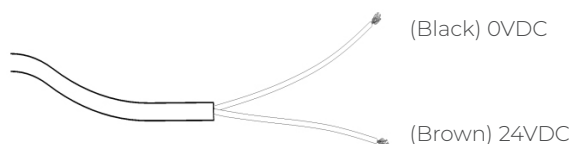
Laminar Jet - LJ Series

Connection Diagram

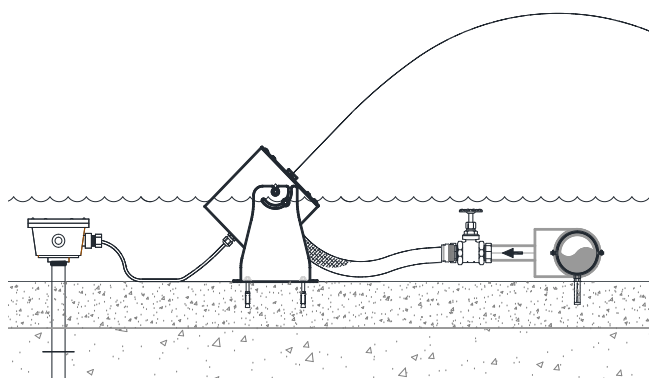
RGBW Light Cable



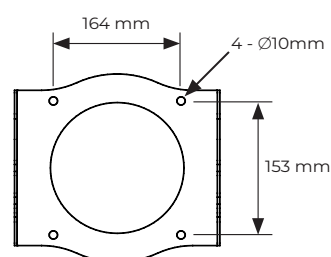
Warm White/ Cool White Light Cable



Typical Installation



Stand hole measurement




Water Requirements:

This fountain must be used with a clean and steady flow of water. The water quality should meet the water standard for swimming pools in order to achieve good laminar flow and illumination effects.



Precautions:

1. This device is not designed for use in windy environment.
2. Hose connection should be used and the water supply should be steady and stable.
3. Clean the sponge inside the Laminar periodically to ensure the steady water flow.
4. If noise can be heard from the nozzle, please adjust the angle of the fountain by 15°, then change it back to the angle that you desire.

Laminar Jet	LJ Series	Model No. LJ	Rev. 1	
The information contained in this drawing is the sole property of Aquashi. Any reproduction in part or as a whole without the written permission of Aquashi is prohibited. Aquashi reserves the right to update all designs, specifications and data sheets without prior notice.				