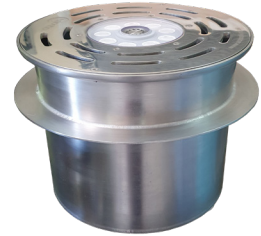


Niched Slab Hanger Light with Nozzle - NSH Series

Function

The Niched slab hanger light with nozzle comes complete with Column jet or Precision jet, LED light, integrated junction box and drain outlet for easy installation. The stainless steel niche is designed for poured concrete dry deck fountain & walkable applications. The LED light is available in RGBW or white colour, DMX controlled for sequencing effects. An incorporated valve for nozzle height adjustment is also included.



Specifications

Light Power

30 - 35W

Light Voltage

12 - 24V DC

Light Colours

RGBW / White

Light Cable

4 C - 1 mm² (DMX light)

2 C - 1.5 mm² (White light)

Light Material:

Stainless steel 316

Light Front Cover:

Polycarbonate clear cover

Junction Box

Stainless steel 316 with cord seals

Nozzle Material

Stainless steel 316

Niche & Cover Material

Stainless steel 316

Connection Sizes

1" BSP Inlet connection

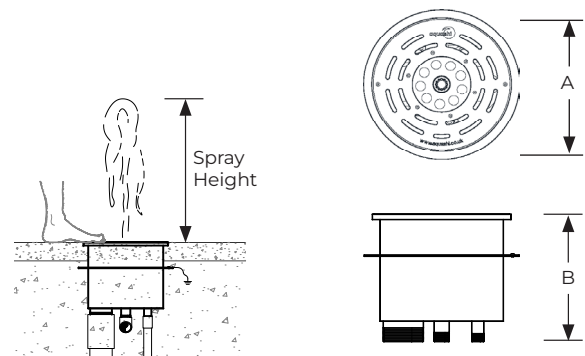
3/4" BSP Electrical connections

3" BSP Drain connection

Protection Rating:

Light: IP 68, IK 10

Junction Box: IP 68




Round Niched Slab Hanger with Column Jet Nozzle

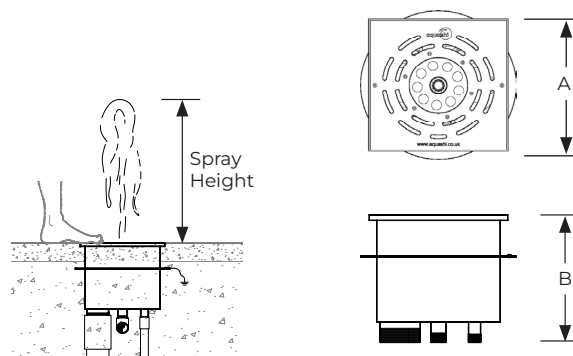
| Model No. | Nozzle Type | Slab Hanger Shape | Light Colour | Light Control | Light Power (W) | Luminous Flux (lm) | A (mm) | B (mm) | Spray Height (m) | 0.5 | 1 | 1.5 | 2 | 2.5 |
|-------------------|-------------|-------------------|--------------|---------------|-----------------|--------------------|--------|--------|------------------|------|------|------|------|------|
| NSH-S035R-CLM-100 | Column Jet | Round | RGBW | DMX | 35 | 1369 | 305 | 312 | Flow (LPM) | 35.8 | 41.8 | 47.9 | 53.9 | 60 |
| | | | | | | | | | Head (m) | 5.5 | 8.3 | 11 | 13.8 | 16.5 |
| NSH-S031R-CLM-100 | Column Jet | Round | Cool white | On/off | 30 | 2118 | 305 | 312 | Flow (LPM) | 35.8 | 41.8 | 47.9 | 53.9 | 60 |
| | | | | | | | | | Head (m) | 5.5 | 8.3 | 11 | 13.8 | 16.5 |
| NSH-S032R-CLM-100 | Column Jet | Round | Warm white | On/off | 30 | 1871 | 305 | 312 | Flow (LPM) | 35.8 | 41.8 | 47.9 | 53.9 | 60 |
| | | | | | | | | | Head (m) | 5.5 | 8.3 | 11 | 13.8 | 16.5 |

* Add suffix DMX to model number to order DMX controlled white light. i.e. NSH-S032R-CLM-100-DMX

* Add suffix AUTO to model number to order Auto colour changing effect for RGBW light. i.e. NSH-S032R-CLM-100-AUTO

| | | | | |
|---|------------|---------------|--------|---|
| Niched Slab Hanger with Nozzle | NSH Series | Model No. NSH | Rev. 1 |  |
| The information contained in this drawing is the sole property of Aquashi. Any reproduction in part or as a whole without the written permission of Aquashi is prohibited. Aquashi reserves the right to update all designs, specifications and data sheets without prior notice. | | | | |

Niched Slab Hanger Light with Nozzle - NSH Series

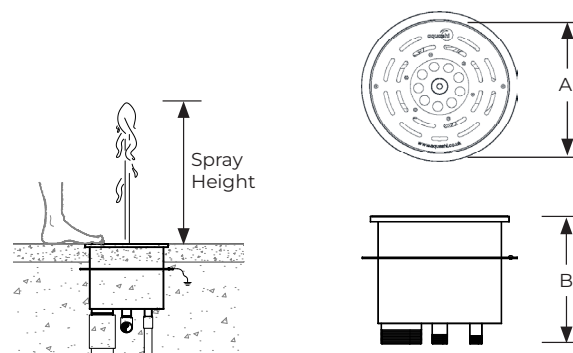


Square Niched Slab Hanger with Column Jet Nozzle

| Model No. | Nozzle Type | Slab Hanger Shape | Light Colour | Light Control | Light Power (W) | Luminous Flux (lm) | A (mm) | B (mm) | Spray Height (m) | 0.5 | 1 | 1.5 | 2 | 2.5 |
|-------------------|-------------|-------------------|--------------|---------------|-----------------|--------------------|--------|--------|------------------|------|------|------|------|------|
| NSH-S035S-CLM-100 | Column Jet | Square | RGBW | DMX | 35 | 1369 | 305 | 312 | Flow (LPM) | 35.8 | 41.8 | 47.9 | 53.9 | 60 |
| | | | | | | | | | Head (m) | 5.5 | 8.3 | 11 | 13.8 | 16.5 |
| NSH-S031S-CLM-100 | Column Jet | Square | Cool white | On/off | 30 | 2118 | 305 | 312 | Flow (LPM) | 35.8 | 41.8 | 47.9 | 53.9 | 60 |
| | | | | | | | | | Head (m) | 5.5 | 8.3 | 11 | 13.8 | 16.5 |
| NSH-S032S-CLM-100 | Column Jet | Square | Warm white | On/off | 30 | 1871 | 305 | 312 | Flow (LPM) | 35.8 | 41.8 | 47.9 | 53.9 | 60 |
| | | | | | | | | | Head (m) | 5.5 | 8.3 | 11 | 13.8 | 16.5 |

* Add suffix DMX to model number to order DMX controlled white light. i.e. NSH-S032S-CLM-100-DMX

* Add suffix AUTO to model number to order Auto colour changing effect for RGBW light. i.e. NSH-S032S-CLM-100-AUTO




Round Niched Slab Hanger with Precision Jet Nozzle

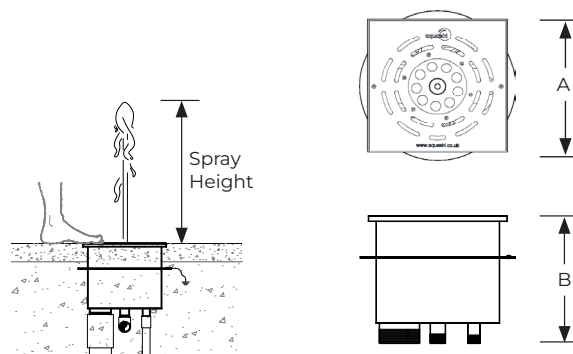
| Model No. | Nozzle Type | Slab Hanger Shape | Light Colour | Light Control | Light Power (W) | Luminous Flux (lm) | A (mm) | B (mm) | Spray Height (m) | 0.5 | 1 | 1.5 | 2 | 2.5 |
|-------------------|---------------|-------------------|--------------|---------------|-----------------|--------------------|--------|--------|------------------|------|------|------|------|------|
| NSH-S035R-PJS-100 | Precision Jet | Round | RGBW | DMX | 35 | 1369 | 305 | 312 | Flow (LPM) | 27.5 | 34.1 | 40.7 | 46.2 | 51.7 |
| | | | | | | | | | Head (m) | 3.3 | 5.7 | 7.7 | 9.9 | 13.2 |
| NSH-S031R-PJS-100 | Precision Jet | Round | Cool white | On/off | 30 | 2118 | 305 | 312 | Flow (LPM) | 27.5 | 34.1 | 40.7 | 46.7 | 51.7 |
| | | | | | | | | | Head (m) | 3.3 | 5.7 | 7.7 | 9.9 | 13.2 |
| NSH-S032R-PJS-100 | Precision Jet | Round | Warm white | On/off | 30 | 1871 | 305 | 312 | Flow (LPM) | 27.5 | 34.1 | 40.7 | 46.7 | 51.7 |
| | | | | | | | | | Head (m) | 3.3 | 5.7 | 7.7 | 9.9 | 13.2 |

* Add suffix DMX to model number to order DMX controlled white light. i.e. NSH-S032R-PJS-100-DMX

* Add suffix AUTO to model number to order Auto colour changing effect for RGBW light. i.e. NSH-S032R-PJS-100-AUTO

| | | | | |
|---|------------|---------------|--------|---|
| Niched Slab Hanger with Nozzle | NSH Series | Model No. NSH | Rev. 1 |  |
| The information contained in this drawing is the sole property of Aquashi. Any reproduction in part or as a whole without the written permission of Aquashi is prohibited. Aquashi reserves the right to update all designs, specifications and data sheets without prior notice. | | | | |

Niched Slab Hanger Light with Nozzle - NSH Series



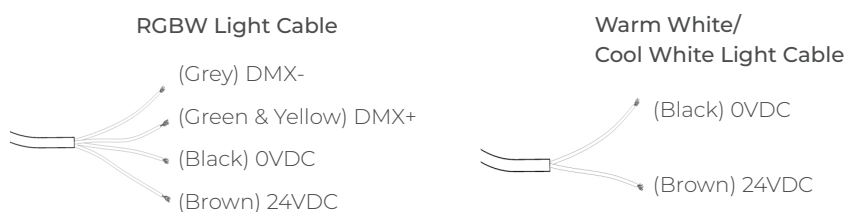
Square Niched Slab Hanger with Precision Jet Nozzle

| Model No. | Nozzle Type | Slab Hanger Shape | Light Colour | Light Control | Light Power (W) | Luminous Flux (lm) | A (mm) | B (mm) | Spray Height (m) | 0.5 | 1 | 1.5 | 2 | 2.5 |
|-------------------|---------------|-------------------|--------------|---------------|-----------------|--------------------|--------|--------|------------------|------|------|------|------|------|
| NSH-S035S-PJS-100 | Precision Jet | Square | RGBW | DMX | 35 | 1369 | 305 | 312 | Flow (LPM) | 27.5 | 34.1 | 40.7 | 46.2 | 51.7 |
| | | | | | | | | | Head (m) | 3.3 | 5.7 | 7.7 | 9.9 | 13.2 |
| NSH-S031S-PJS-100 | Precision Jet | Square | Cool white | On/off | 30 | 2118 | 305 | 312 | Flow (LPM) | 27.5 | 34.1 | 40.7 | 46.7 | 51.7 |
| | | | | | | | | | Head (m) | 3.3 | 5.7 | 7.7 | 9.9 | 13.2 |
| NSH-S032S-PJS-100 | Precision Jet | Square | Warm white | On/off | 30 | 1871 | 305 | 312 | Flow (LPM) | 27.5 | 34.1 | 40.7 | 46.7 | 51.7 |
| | | | | | | | | | Head (m) | 3.3 | 5.7 | 7.7 | 9.9 | 13.2 |

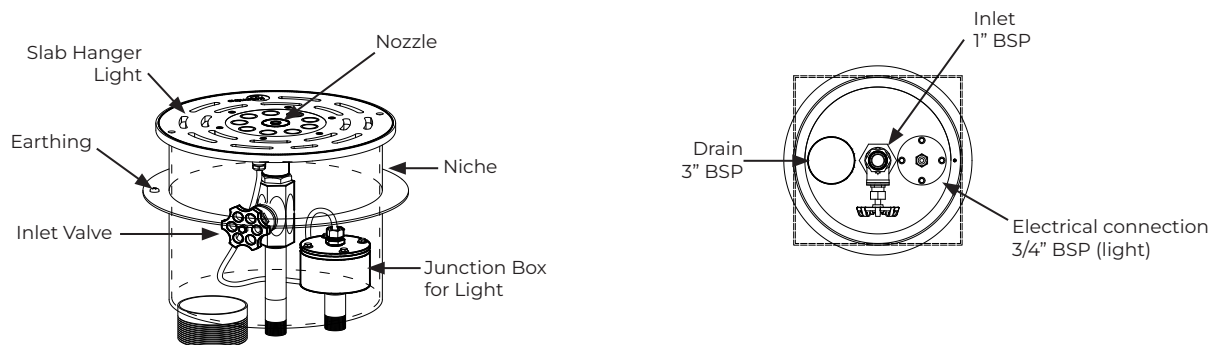
* Add suffix DMX to model number to order DMX controlled white light. i.e. NSH-S032S-PJS-100-DMX


* Add suffix AUTO to model number to order Auto colour changing effect for RGBW light. i.e. NSH-S032S-PJS-100-AUTO

Connection Diagram



Niched Slab hanger with nozzle Parts



| | | | | |
|---|------------|---------------|--------|---|
| Niched Slab Hanger with Nozzle | NSH Series | Model No. NSH | Rev. 0 |  |
| The information contained in this drawing is the sole property of Aquashi. Any reproduction in part or as a whole without the written permission of Aquashi is prohibited. Aquashi reserves the right to update all designs, specifications and data sheets without prior notice. | | | | |