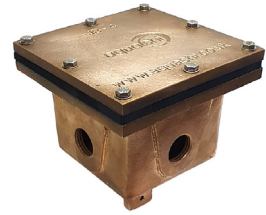


Underwater Junction Box - JB Series

Function

The cast bronze underwater junction boxes comes in various sizes and designed to accept naval brass compression and seal (CS Series) providing water tight connections for flexible cables and other devices. The conduit mounted junction box comes complete with rubber gasket and integrated earthing leg.

All threaded connections must be installed with an approved water sealing thread seal. All junction boxes have one internal and one external electrical bonding connection. Recommended to isolate with junction box sealant (PCR Series). Made of cast bronze with stainless fasteners.



Specifications

Materials

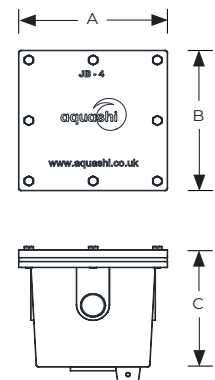
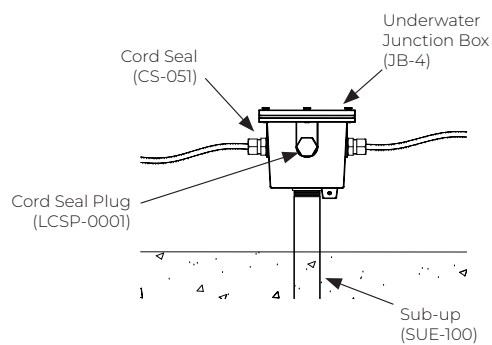
Cast Bronze w/ Stainless steel fasteners.

Connection Size

Sides - 1/2" female thread
(optional 3/4" female thread side connection)
Bottom - 3/4" to 2" female thread
(custom thread available on request)

Protection Rating

IP 68



Model No.	Description	No. of ways	Side thread (BSP)	Bottom thread (BSP)	A (mm)	B (mm)	C (mm)
JB-2	2 cable Underwater Junction Box	2	1/2"	3/4"	104	82	70
JB-4	4 cable Underwater Junction Box	4	1/2"	1"	112	112	80
JB-8	8 cable Underwater Junction box	8	1/2"	1-1/2"	139	139	85
JB-12	12 cable Underwater Junction Box	12	1/2"	2"	139	139	120

* Custom inlet/outlet available on request.



Junction Box should be earthed

Accessories (Sold Separately)



Cord Seals

- * CS-050 (1/2" threaded)
- * CS-051 (1/2" threaded)



Cord Seal Plug

- * LCSP-001 (1/2" threaded)



Potting Compound

- * PCR-100 (Volume 338.3 cm³)
- * PCR-200 (Volume 665.3 cm³)




Junction Box Gasket (Spare Part)

- * LBG-001 (for JB-2)
- * LBG-002 (for JB-4)
- * LBG-003 (for JB-8)
- * LBG-004 (for JB-12)



Stub-Up Electrical

- * SUE-075 (3/4" threaded)
- * SUE-100 (1" threaded)
- * SUE-150 (1-1/2" threaded)
- * SUE-200 (2" threaded)

Junction Box	JB Series	Model No. JB	Rev. 2	
The information contained in this drawing is the sole property of Aquashi. Any reproduction in part or as a whole without the written permission of Aquashi is prohibited. Aquashi reserves the right to update all designs, specifications and data sheets without prior notice.				