

# Underwater LED Swimming Pool Light - LSP-DVA Series

## Function

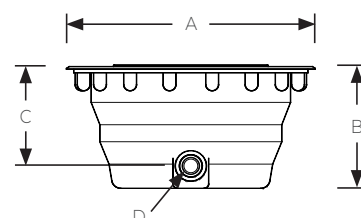
Niche mounted DVA Series features an extensive range of colour options through its White, Warm white and RGBW capabilities. The lights consists of a stainless steel 316 face plate with an ABS or Stainless steel 316 niche. The LED lamp is fully sealed so water cannot penetrate or damage the fixture. Fitted with the Quick Connect cabling system that is reliable and easy to mount.

RGB LED lights have an embedded 14 programmed animation can be controlled using the Link Driver (RM-200) or by simply turning off and on the lamps in a sequenced manner.

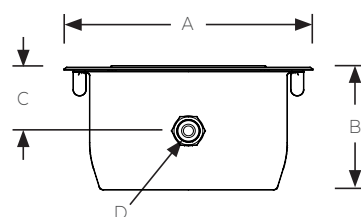


## Specifications


<b>Power</b> 50W	<b>Control</b> On/off or PLC	<b>Temperature range:</b> +40° water temperature
<b>Voltage</b> 12V AC	<b>Dimmable</b> Use with Link Touch	<b>Protection Rating:</b> IP 68 , IEC class III
<b>Colours</b> RGBW / White	<b>Cable</b> 2 C - 1 mm <sup>2</sup>	
<b>Beam Angle:</b> 116°	<b>Standard Cable Length</b> 2 meters	



Model No.	Description	Niche type	Colour	Power (W)	Luminous flux (lm)	A (mm)	B (mm)	C (mm)	D (BSP) Female thread
LSP-DVA-170RGBW-ABS	ABS niched Ø170 DVA - RGBW LED Swimming Pool light	ABS	RGBW	50	3800	272	137	125	3/4"
LSP-DVA-170WW-ABS	ABS niched Ø170 DVA - Warm White LED Swimming Pool light	ABS	White (3500K)	50	5500	272	137	125	3/4"
LSP-DVA-170WH-ABS	ABS niched Ø170 DVA - White LED Swimming Pool light	ABS	White (7700K)	50	5500	272	137	125	3/4"



Model No.	Description	Niche type	Colour	Power (W)	Luminous flux (lm)	A (mm)	B (mm)	C (mm)	D (BSP) Female thread
LSP-DVA-170RGBW-SS	SS 316 niched Ø170 DVA - RGBW LED Swimming Pool light	SS316	RGBW	50	3800	272	125	70	3/4"
LSP-DVA-170WW-SS	SS 316 niched Ø170 DVA - Warm White LED Swimming Pool light	SS316	White (3500K)	50	5500	272	125	70	3/4"
LSP-DVA-170WH-SS	SS 316 niched Ø170 DVA - White LED Swimming Pool light	SS316	White (7700K)	50	5500	272	125	70	3/4"

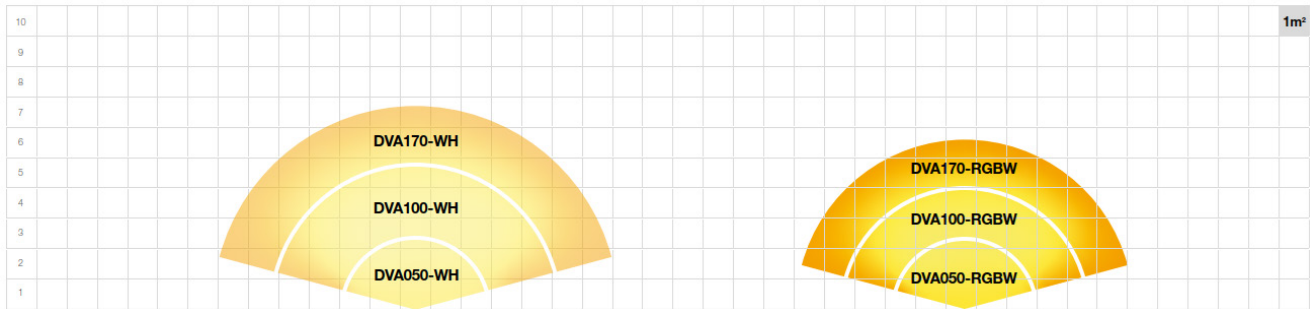
Underwater LED Swimming Pool Light	LSP-DVA Series	Model No. LSP-DVA	Rev. 0	
The information contained in this drawing is the sole property of Aquashi. Any reproduction in part or as a whole without the written permission of Aquashi is prohibited. Aquashi reserves the right to update all designs, specifications and data sheets without prior notice.				

# Underwater LED Swimming Pool Light - LSP-DVA Series



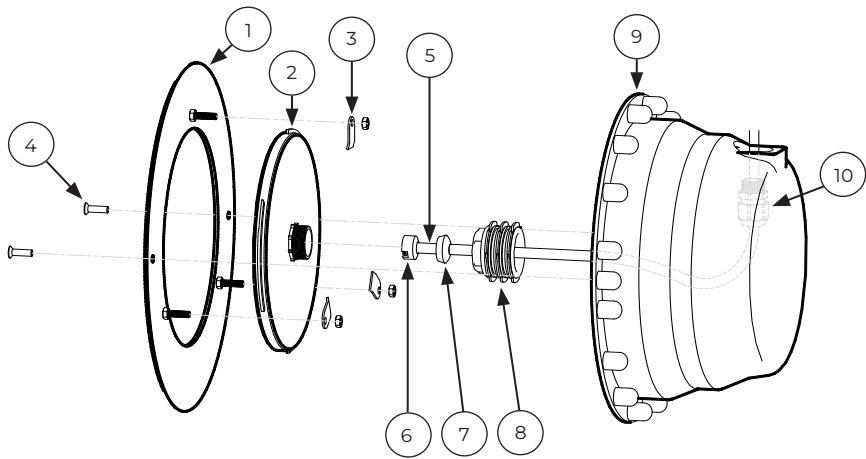
- Precautions:**
- \* DVA series lamps must be completely submerged into water during operation.
  - \* Fixing the lamps with adhesives or silicone kit into a niche is not allowed.
  - \* For operation only with safety isolation transformer

## Illumination per m²:



- \* Values in graph refer to swimming pools with white or light-coloured walls that require 100 - 150 lm/m².
- \* Increase the light (lumen) by 50% for medium colours.
- \* Dark walls are difficult to illuminate and need up to 250% extra light.

## Connection Diagram



### Lamp Assembly


#	Part Name
1	Ø100 LSP faceplate
2	DVA-170-RGBW
3	LSP Clamp w/ M5 nut ( 3 nos. )
4	Flat Screw ( 2 nos. )

### Quick Connect cable system

#	Part Name
5	2 C - 1mm² Underwater Cable ( 12V AC )
6	Quick connector
7	Silicone Gasket
8	Fix Nut

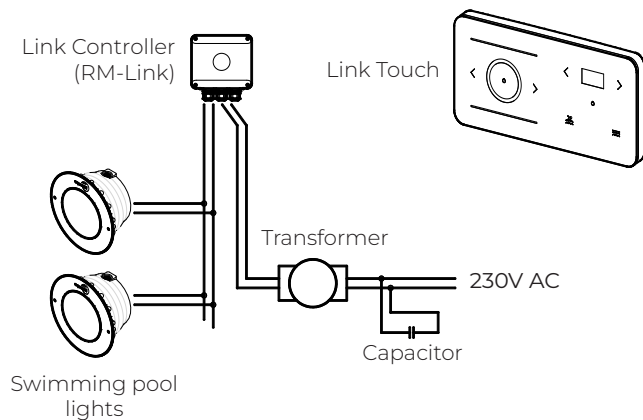
### Niche Assembly

#	Part Name
9	Niche ( ABS or SS316 )
10	Cord Seal

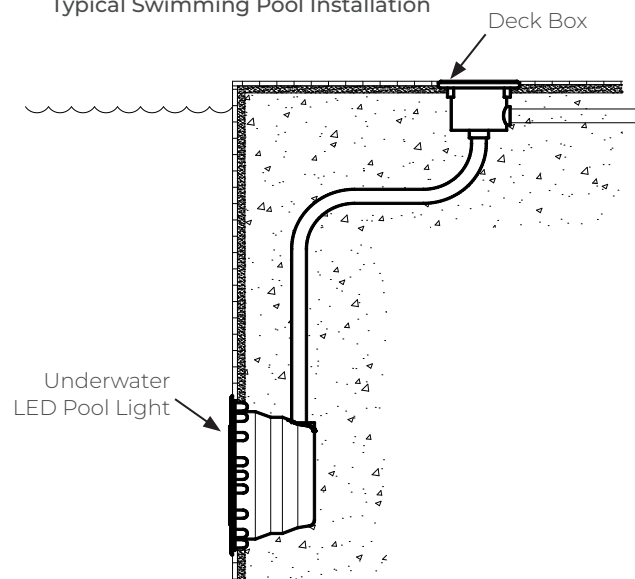
Underwater LED Swimming Pool Light	LSP-DVA Series	Model No. LSP-DVA	Rev. 0	
The information contained in this drawing is the sole property of Aquashi. Any reproduction in part or as a whole without the written permission of Aquashi is prohibited. Aquashi reserves the right to update all designs, specifications and data sheets without prior notice.				

# Underwater LED Swimming Pool Light - LSP-DVS Series

Typical wiring installation



Typical Swimming Pool Installation



## Synchronizing & colour changing ( only for RGBW lamps )

### Manual synchronization

1. Turn the lamps ON and make sure all lights up.
2. Turn them OFF for MINIMUM 20 seconds
3. Switch ON and Switch OFF, Switch ON and Switch OFF
4. Switch ON
5. The lamps should now all be on colour program 1

### Using Link Controller (RM-Link) with hand-held RF Remote

1. Turn the lamps ON and push the UP button 10 times. Wait for 20 seconds, then turn the lamps OFF.
2. Repeat this process until the lamps react to the remote. As soon as the lamps follow the remote: wait 1 minute.
3. The lamps are now synced.

### Using Link Controller (RM-Link) with Link Touch


1. Make sure the Link Touch is paired with Link Controller. To pair, make sure both are in about <2m proximity with each other. Select " Pair Start" on the Link Touch screen then power ON the device. Pairing mode will be in about 2 minutes.
2. Turn the lamps on and spin the colour wheel on the Link Touch until the lamps react.
3. If the lamps do not react, turn them off and back on until they react to the colour wheel.
4. As soon as the lamps follow the colour wheel: wait 1 minute.
5. The lamps are now synced.

### Changing colours

Turn the lamps OFF and quickly back ON, The lamp will jump to the next colour program.

### Memorizing the actual colour

1. Turn the lamps OFF for MINIMUM 20 seconds
2. The chosen colour has now been memorized

Underwater LED Swimming Pool Light	LSP-DVA Series	Model No. LSP-DVA	Rev. 0	
The information contained in this drawing is the sole property of Aquashi. Any reproduction in part or as a whole without the written permission of Aquashi is prohibited. Aquashi reserves the right to update all designs, specifications and data sheets without prior notice.				

# Underwater LED Swimming Pool Light - LSP-DVS Series

## 14 Colour programs ( only for RGBW Lamps )

Program #	Program Name	Colour
1	DEEP BLUE SEA	saturated blue
2	DAYLIGHT BLUE	light blue
3	SUNSET	slow animation from orange to red
4	LOVE IS IN THE AIR	red
5	FOREST SPRING	green
6	THINK PINK	pink
7	SUNSHINE	yellow
8	JUNGLE BEACH	slow animation blue and green tints
9	VOODOO	slow animation red and purple tints
10	DISCO	fast animation lila - pink - peach - yellow - green blue
11	PARTY	fast animation blue - green - red - pink - yellow - green
12	WARM WHITE	3000K
13	NEUTRAL WHITE	6000K
14	SUN WHITE	10500K

## Accessories




**Link Driver**  
RM-200  
\* for all DVA Series  
Swimming pool lights



**Link Controller**  
RM-Link  
\* for all DVA Series  
Swimming pool lights



**Link Touch - RGBW**  
\* for RGBW lights

Underwater LED Swimming Pool Light	LSP-DVA Series	Model No. LSP-DVA	Rev. 0	
The information contained in this drawing is the sole property of Aquashi. Any reproduction in part or as a whole without the written permission of Aquashi is prohibited. Aquashi reserves the right to update all designs, specifications and data sheets without prior notice.				