

# 24V DC Variable DMX Pump

## Function

Low voltage 24V DC Variable Pump is designed for interactive water features, ensuring a safe and engaging experience for users. Its low voltage operation minimizes electrical hazards, making it ideal for environments where people can closely interact with water.

The brushless DC motor offers precise control over water flow, enabling customizable fountain heights through DMX control.

This DMX pump is also capable of daisy chaining up to 15 pumps. Each unit features a unique DMX address and equipped with an IP68 rated encapsulated DMX driver, ensuring reliable performance in underwater environments.



## Features:

- Low voltage operation
- No complicated piping required
- Capable of looping up to 15 pumps
- Easy installation
- Small unit ( require small area of installation )

## Specifications

### Power

100W, 200W, 300W

### Operating Voltage

24V DC

### Control Protocol

DMX 512

### No. of channels

2 (Stand by, Speed)

### Cable Size

2 C - 1 mm<sup>2</sup> (Power)

### Cable Length

3m (24V DC Power)

3m (DMX Input)

3m (DMX Output)

### Max Operating Time:

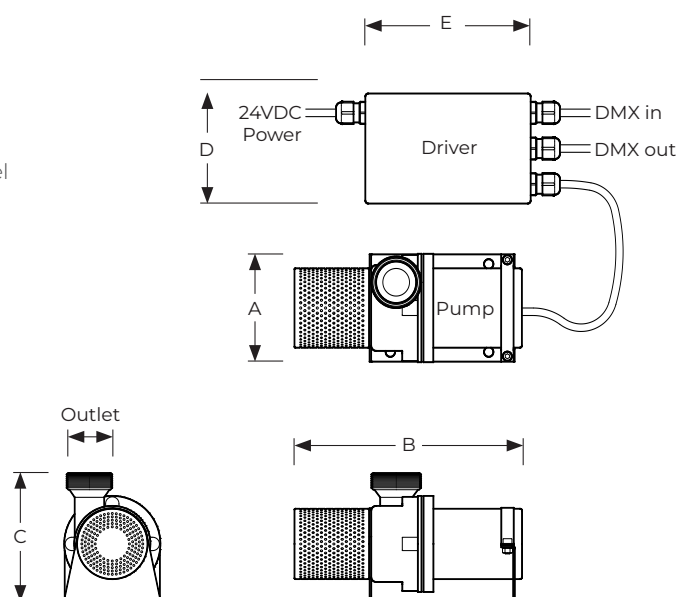
16 Hrs per day

### Material

PC Plastic Body, Stainless steel


### Protection Rating:

IP 68



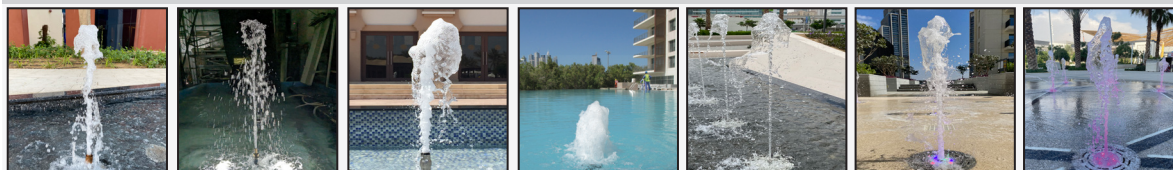
Model No.	Description	Power (W)	Flow rate	Outlet (BSP)	A (mm)	B (mm)	C (mm)	D (mm)	E (mm)
DMXP-100	100W DMX Variable Pump	100	83 LPM @ 2 (m) head	1-1/4"	101	220	134	108	168
DMXP-200	200W DMX Variable Pump	200	145 LPM @ 2 (m) head	1-1/2"	101	220	134	108	168
DMXP-300	300W DMX Variable Pump	300	180 LPM @ 2 (m) head	2"	101	220	134	108	168

\* see Performance graph for more flow rate information.

24V DC Variable Pump	DMXP Series	Model No. DMXP	Rev. 0	
The information contained in this drawing is the sole property of Aquashi. Any reproduction in part or as a whole without the written permission of Aquashi is prohibited. Aquashi reserves the right to update all designs, specifications and data sheets without prior notice.				

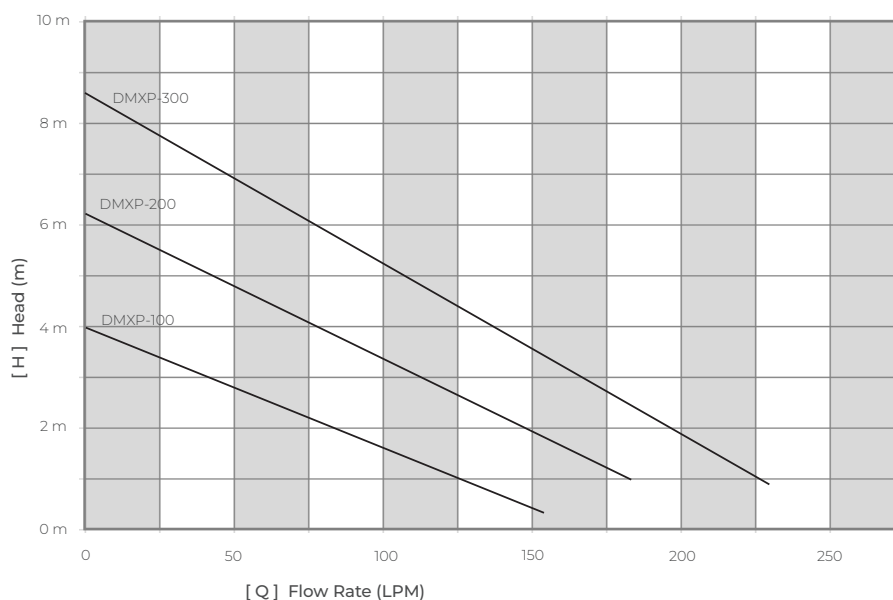
## 24V DC Variable Pump

Maximum Height of DMX Pump + Nozzle



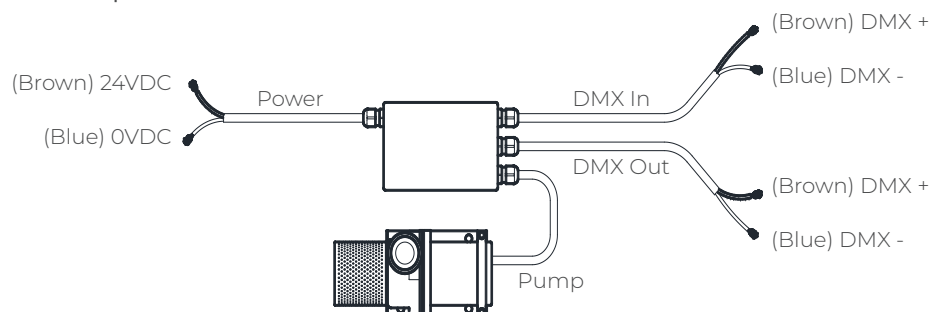
Model No.	AJI-100	PJS-100	FJI-SP-100	PBJ-200	DPJ-075-012	CLM-M075S	PJS-M075S
DMXP-100	2.5 m	2.5 m	1 m	0.4 m	2 m	2 m	2.5 m
DMXP-200	3.3 m	4.5 m	1.6 m	0.8 m	3 m	3 m	3.5 m
DMXP-300	4 m	6.5 m	2.2 m	1.2 m	4 m	4 m	4.5 m


DMXP - Series Performance graph



### Connection Diagram

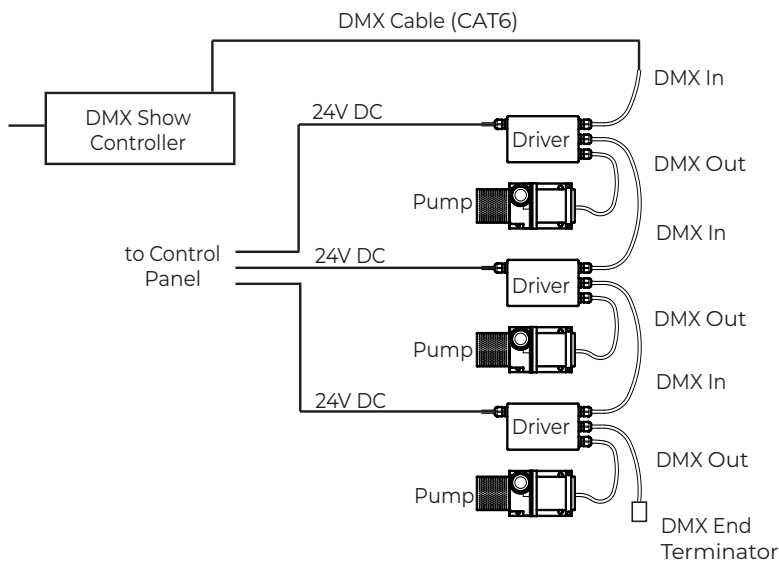
#### DMX Pump Cable Connection



24V DC Variable Pump	DMXP Series	Model No. DMXP	Rev. 0	
The information contained in this drawing is the sole property of Aquashi. Any reproduction in part or as a whole without the written permission of Aquashi is prohibited. Aquashi reserves the right to update all designs, specifications and data sheets without prior notice.				

# 24V DC Variable Pump

Sample schematic diagram




Pump Address	DMX Channel	Part Name	DMX Value
P-1	1	Standby On / Off	< 128 : Off > 127 : On
	2	Speed ( height of flow )	0 - 255 : Zero to Max Power



Precautions:

1. Use IP68 rated cable joining kits or Junction boxes on all wire splices.
2. Wrong Polarity can damage the pump driver module.
3. Always connect DMX End Terminator at the last DMX output cable.
4. Pump should be underwater (minimum of 16cm deep) while operational.
5. Total pumps should not exceed 15 nos. in each loop.
6. Total length of DMX cable in each loop should not exceed 100 meters.

24V DC Variable Pump	DMXP Series	Model No. DMXP	Rev. 0	
The information contained in this drawing is the sole property of Aquashi. Any reproduction in part or as a whole without the written permission of Aquashi is prohibited. Aquashi reserves the right to update all designs, specifications and data sheets without prior notice.				